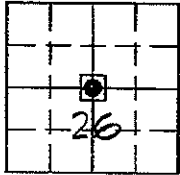


Marie Krutzfield, Recorder
 Jones County, Iowa

Prepared by: Richard M. Kordick, P.E., L.S., 120 East Main, Suite D, Anamosa, IA 52205 Phone: (319) 462-4498

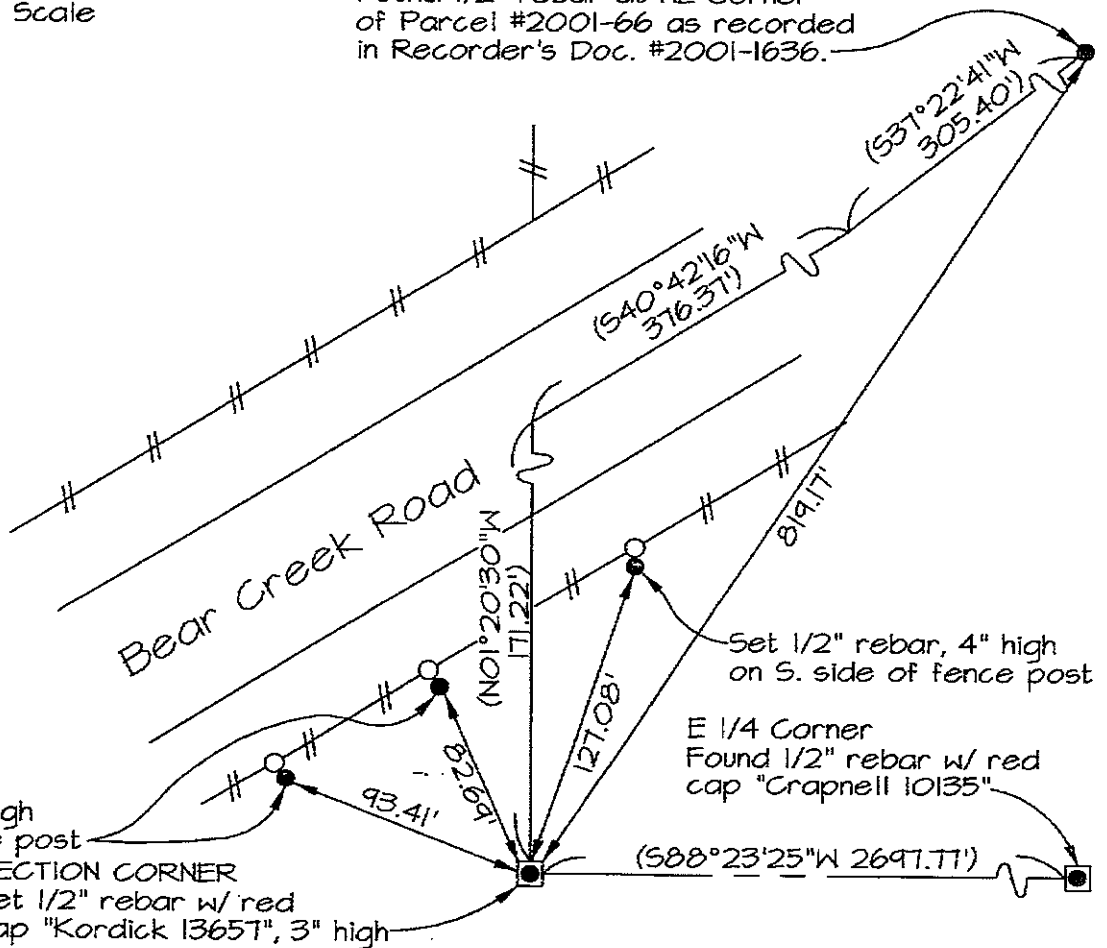
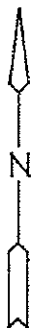
U.S. PUBLIC LAND SURVEY CORNER CERTIFICATE



Plan-View
 No Scale

Found 1/2" rebar at NE Corner of Parcel #2001-66 as recorded in Recorder's Doc. #2001-1636.

Center
 26-84N-1W
 Jones County
 WYOMING Township



Set 1/2" rebar, 4" high on SE side of fence post

SECTION CORNER

Set 1/2" rebar w/ red cap "Kordick 13657", 3" high

Set 1/2" rebar, 4" high on S. side of fence post

E 1/4 Corner
 Found 1/2" rebar w/ red cap "Crapnell 10135"

Reason for corner tie:

■ A) There is no certificate for the corner on file with the recorder.

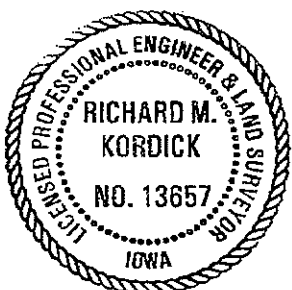
Research at the recorder's office, auditor's office, and engineer's office revealed the following: A plat in Recorder's Document #2001-1636 called for a "Set Section Corner" at this corner.

Field search performed was as follows:

Field search was performed with a metal detector, excavation and probing. Nothing was found.

Monument Found or set:

A 1/2" rebar with red cap "Kordick 13657" was set, as per dimensions on plat recorded in Recorder's Document #2001-1636.



I hereby certify that this land surveying document was prepared and the related survey work was performed by me or under my direct personal supervision and that I am a duly licensed Land Surveyor under the laws of the State of Iowa.

Richard M. Kordick 4/19/2007
 Richard M. Kordick date
 License number 13657

My license renewal date is December 31, 2007.
 Pages or sheets covered by this seal: 1 of 1

LEGEND:

- Section Corner as noted
- ⊕ Power Pole
- Section line
- - - Centerline
- ||| Existing Fence
- () Recorded Dist.

Kordick Surveying & Engineering
 120 East Main, Suite D
 Anamosa, Iowa 52205
 (319) 462-4498

U.S. Public Land
 Survey Corner Certificate

Project: Plat of Survey
 RETRACEMENT
 Proprietor: Lloyd E. Van Dorn and
 Marjorie A. Van Dorn

Field BK
 06085
 Date
 4-19-07
 Job No.
 06085
 Sheet
 1 of 1