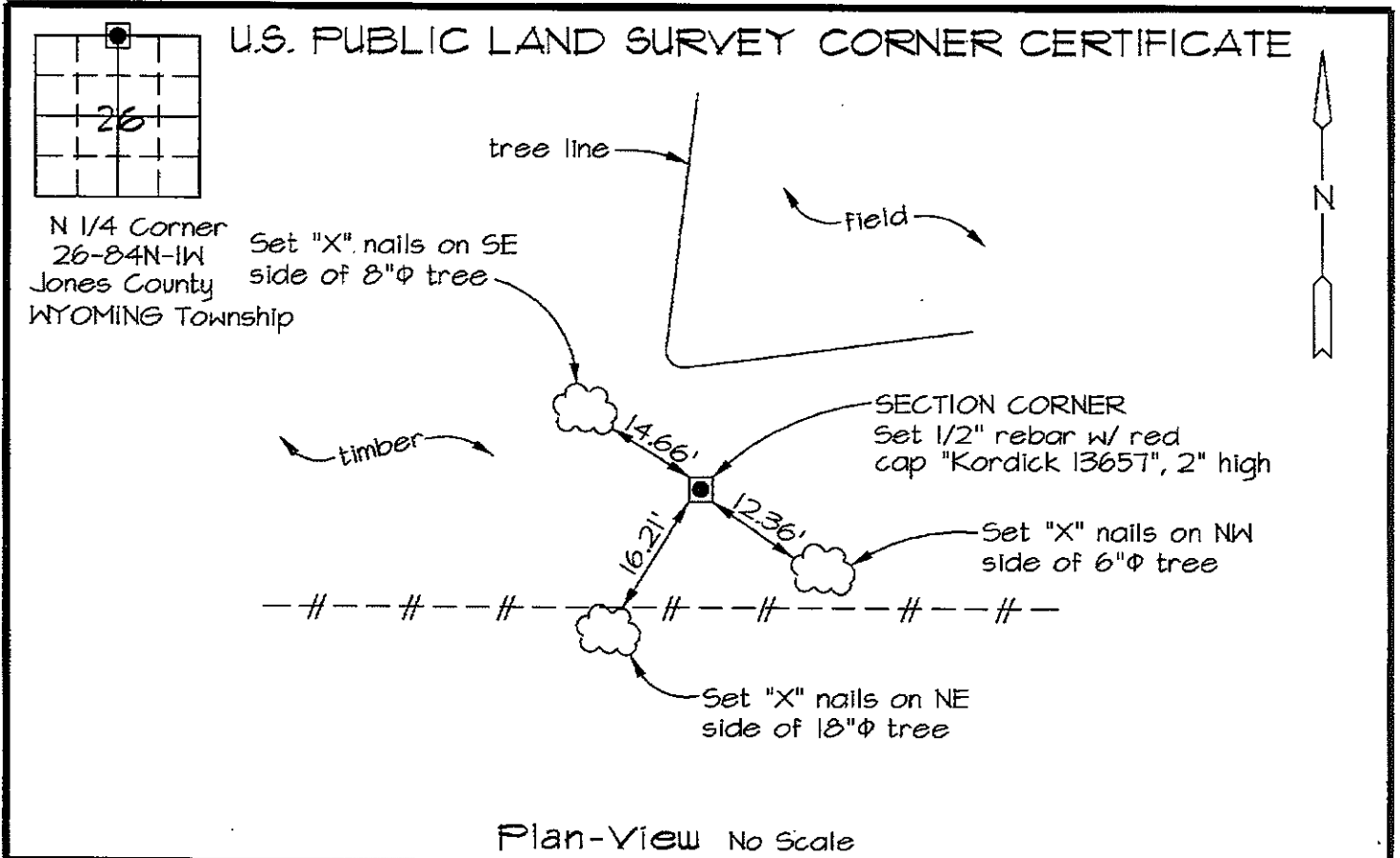


Marie Krutzfield, Recorder
 Jones County, Iowa

Prepared by: Richard M. Kordick, P.E., L.S., 120 East Main, Suite D, Anamosa, IA 52205 Phone: (319) 462-4498



Reason for corner tie:
 A) There is no certificate for the corner on file with the recorder.
 B) Corner position differs from previously recorded certificate recorded in book , page
 C) Corner monument was replaced or modified.
 D) Reference ties in previously recorded certificate recorded in book , page are incorrect or missing.

Research at the recorder's office, auditor's office, and engineer's office revealed the following:
 None.

Field search performed was as follows:
 Field search was performed with a metal detector, excavation and probing. Nothing was found.

Monument found or set:
 The corner was determined to be lost. A 1/2" rebar with red cap "Kordick 13657" was set, equidistance on-line from the NW Corner to the NE Corner.

I hereby certify that this land surveying document was prepared and the related survey work was performed by me or under my direct personal supervision and that I am a duly licensed Land Surveyor under the laws of the State of Iowa.

Richard M. Kordick 4/14/2007
 Richard M. Kordick date
 License number 13657
 My license renewal date is December 31, 2007.
 Pages or sheets covered by this seal: 1 of 1

LEGEND:

- Section Corner as noted
- ⊕ Power Pole
- Section line
- Centerline
- ## Existing Fence
- () Recorded Dist.

Kordick Surveying & Engineering 120 East Main, Suite D Anamosa, Iowa 52205 (319) 462-4498	U.S. Public Land Survey Corner Certificate		Field BK 06085
	Project: Plat of Survey RETRACEMENT Proprietor: Lloyd E. Van Dorn and Marjorie A. Van Dorn		Date 4-14-07
			Job No. 06085
			Sheet 1 of 1