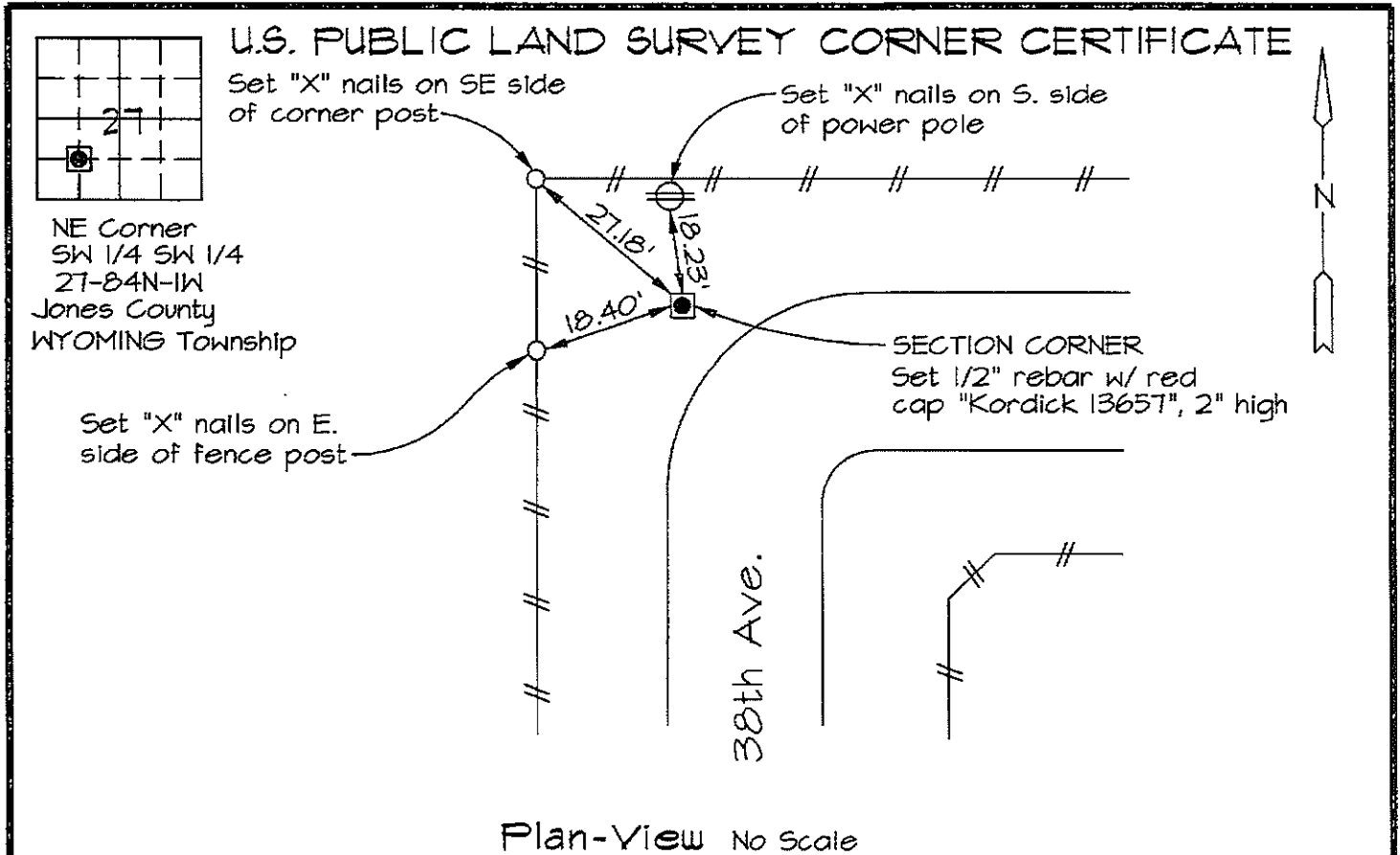


Marie Krutzfield, Recorder
 Jones County, Iowa

Prepared by: Richard M. Kordick, P.E., L.S., 120 East Main, Suite D, Anamosa, IA 52205 Phone: (319) 462-4498



Reason for corner tie:
 A) There is no certificate for the corner on file with the recorder.
 B) Corner position differs from previously recorded certificate recorded in book , page
 C) Corner monument was replaced or modified.
 D) Reference ties in previously recorded certificate recorded in book , page are incorrect or missing.

Research at the recorder's office, auditor's office, and engineer's office revealed the following:
 None.

Field search performed was as follows:
 Field search was performed with a metal detector, excavation and probing. Nothing was found.

Monument found or set:
 The corner was determined to be lost. A 1/2" rebar with red cap "Kordick 13657" was set using the double proportionate measure method and used as the corner.

	<p>I hereby certify that this land surveying document was prepared and the related survey work was performed by me or under my direct personal supervision and that I am a duly licensed Land Surveyor under the laws of the State of Iowa.</p> <p><i>Richard M. Kordick</i> 9/7/2007 Richard M. Kordick date License number 13657 My license renewal date is December 31, 2007. Pages or sheets covered by this seal: 1 of 1</p>	<p>LEGEND:</p> <ul style="list-style-type: none"> Section Corner as noted Power Pole ----- Section line ----- Centerline Existing Fence () Recorded Dist.
--	---	--

Kordick Surveying & Engineering 120 East Main, Suite D Anamosa, Iowa 52205 (319) 462-4498	U.S. Public Land Survey Corner Certificate	Field BK 07027
		Date 9-7-07 Job No. 07027 Sheet 1 of 1
Project: Flat of Survey Parcel No. 2007-91 Recorder's Pl. Bk 5 - Pg. 103		