

RECEIVED

JUL 10 2009

JONES COUNTY ENGINEER

PREPARED BY
STEPHEN MICHAEL BRAIN, BRAIN ENGINEERING, INC., 1540 MIDLAND COURT NE, CEDAR RAPIDS, IOWA PH. (319) 294-9424

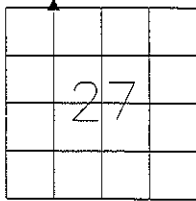
UNITED STATES PUBLIC LAND SURVEY CORNER CERTIFICATE

LAND SURVEY MONUMENTS SITUATED IN SECTION 27, TOWNSHIP 84 NORTH
RANGE 1 WEST OF THE 5TH P.M., JONES COUNTY, IOWA.

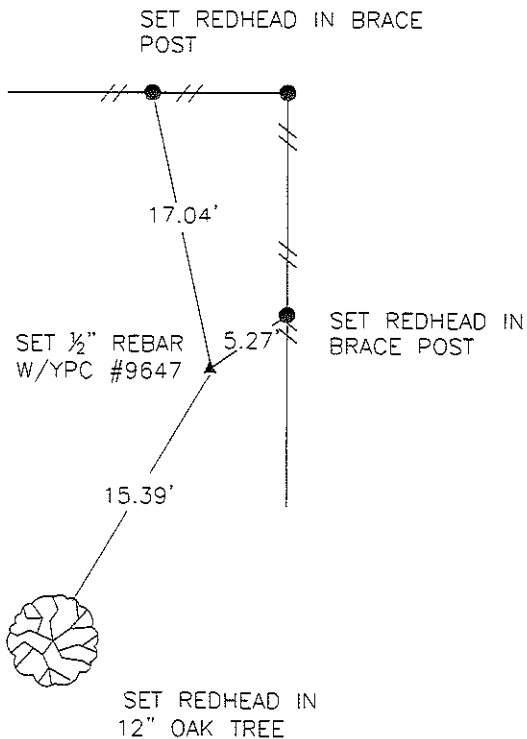
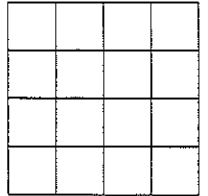
NO SCALE



NE CORNER NW 1/4 NW 1/4



NO SCALE



PREVIOUSLY RECORDED IN BOOK _____ PAGE _____

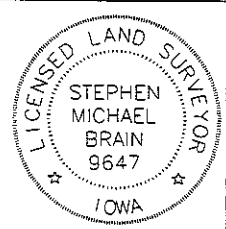
MONUMENT DESCRIPTION AND HOW ESTABLISHED _____

SET 1/2" REBAR W/YELLOW PLASTIC CAP #9647 AT

MIDPOINT OF NORTH LINE, NW 1/4 SECTION 27

PREVIOUSLY RECORDED IN BOOK _____ PAGE _____

MONUMENT DESCRIPTION AND HOW ESTABLISHED _____



I hereby certify that this land surveying document and the related survey work was performed by me or under my direct personal supervision and that I am a duly licensed Land Surveyor under the laws of the State of Iowa.
Signed _____ Date 7/2/09

Stephen Michael Brain, L.S.
My License Renewal Date is December 31, 2010
License Number 9647
Pages or sheets covered by this seal: 1/1

- A. THERE IS NO CERTIFICATE FOR THE CORNER ON FILE WITH THE RECORDER OF THE COUNTY IN WHICH THE CORNER IS LOCATED
- B. THE SURVEYOR IN RESPONSIBLE CHARGE OF THE LAND SURVEYING ACCEPTS A CORNER POSITION WHICH DIFFERS FROM THAT SHOWN IN THE PUBLIC RECORDS OF THE COUNTY IN WHICH THE CORNER IS LOCATED.
- C. THE CORNER MONUMENT IS REPLACED OR MODIFIED IN ANY WAY.
- D. THE REFERENCE TIES REFERRED TO IN AN EXISTING PUBLIC RECORD ARE NOT CORRECT. MS 7/8/09

CORNERS TO BE INDEXED

CORNER	SECTION	TOWNSHIP	RANGE
NE CORNER	27	T84N	R1W
NW 1/4 NW 1/4			

BRAIN ENGINEERING, INC.

1540 MIDLAND COURT NE
CEDAR RAPIDS, IOWA 52402
(319) 294-9424

407409-10