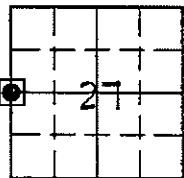


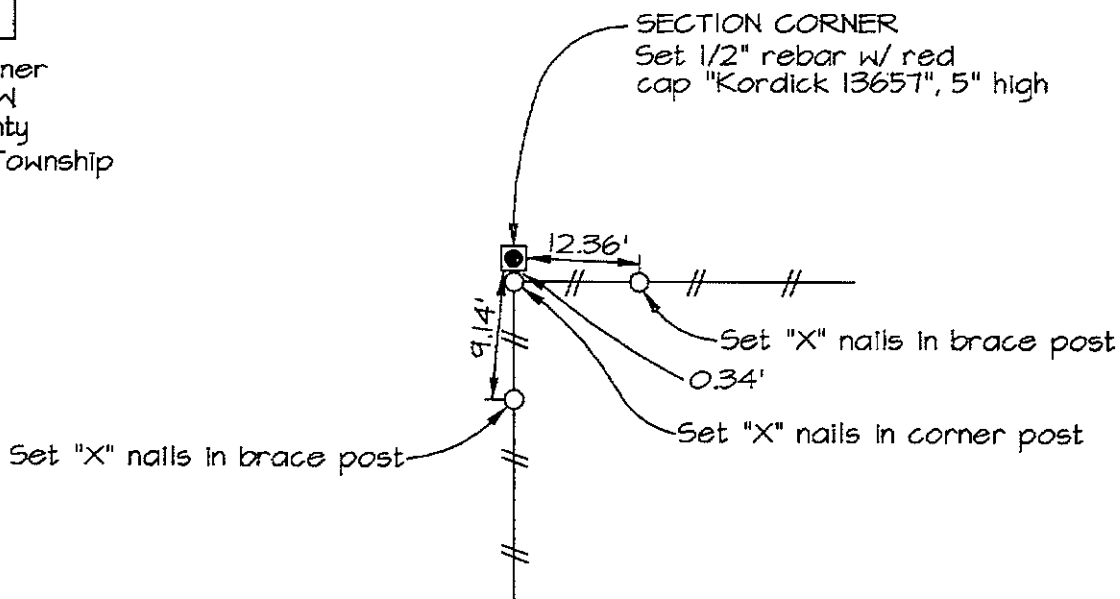
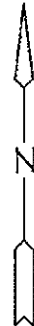
Marie Krutzfield, Recorder
 Jones County, Iowa

Prepared by: Richard M. Kordick, P.E., L.S., 120 East Main, Suite D, Anamosa, IA 52205 Phone: (319) 462-4498

U.S. PUBLIC LAND SURVEY CORNER CERTIFICATE



W 1/4 Corner
 27-84N-1W
 Jones County
 WYOMING Township



Plan-View No Scale

Reason for corner tie:

- A) There is no certificate for the corner on file with the recorder.
- B) Corner position differs from previously recorded certificate recorded in book , page
- C) Corner monument was replaced or modified.
- D) Reference ties in previously recorded certificate recorded in book , page are incorrect or missing.

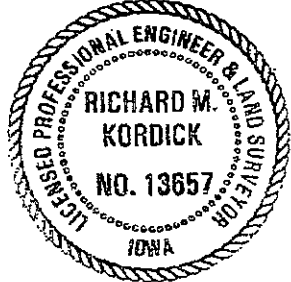
Research at the recorder's office, auditor's office, and engineer's office revealed the following:
 None.

Field search performed was as follows:

Field search was performed with a metal detector, excavation and probing. Nothing was found.

Monument found or set:

The corner was determined to be obliterated. A 1/2" rebar with red cap "Kordick 13657" was set at the existing fence corner which perpetuated the corner and used as the corner.



I hereby certify that this land surveying document was prepared and the related survey work was performed by me or under my direct personal supervision and that I am a duly licensed Land Surveyor under the laws of the State of Iowa.

Richard M. Kordick 9/7/2007
 Richard M. Kordick date
 License number 13657
 My license renewal date is December 31, 2007.
 Pages or sheets covered by this seal: 1 of 1

LEGEND:

- Section Corner as noted
- Power Pole
- Section line
- Centerline
- Existing Fence
- Recorded Dist.

Kordick Surveying
 & Engineering
 120 East Main, Suite D
 Anamosa, Iowa 52205
 (319) 462-4498

U.S. Public Land
 Survey Corner Certificate

Project: Plat of Survey
 Parcel No. 2007-91
 Recorder's Pl. Bk 5 - Pg. 103

Field BK
 01027
 Date
 9-7-07
 Job No.
 01027
 Sheet
 1 of 1