

# THIS IS NOT A CERTIFICATION

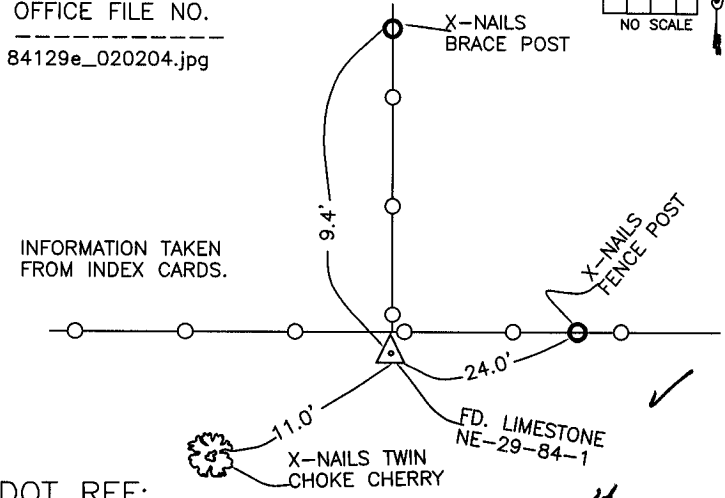
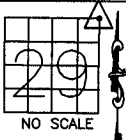
JONES COUNTY ENGINEER'S OFFICE, 19501 HWY. 64, ANAMOSA, IOWA, 52205 (319)462-3785

## UNITED STATES PUBLIC LAND SURVEY CORNER CERTIFICATE

LAND SURVEY MONUMENTS SITUATED IN SECTION 29, TOWNSHIP 84  
NORTH, RANGE 1 WEST OF THE 5TH P.M., JONES COUNTY, IOWA

**CORNERS TO BE INDEXED**

CORNER SECTION TOWNSHIP RANGE  
NORTHEAST 29 84N 1W  
OFFICE FILE NO.  
84129e\_020204.jpg



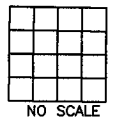
INFORMATION TAKEN FROM INDEX CARDS.  
DOT REF:  
F-64-1(8)--20-53  
8-30-76

1324

PREVIOUSLY RECORDED IN BOOK \_\_\_\_\_, PAGE \_\_\_\_\_  
MONUMENT DESCRIPTION AND HOW ESTABLISHED FOUND  
8"X8"X12" LIMESTONE FLUSH WITH GROUND SURFACE. SET  
REFERENCE POINTS AS INDICATED. NORTHEAST CORNER SECTION 29,  
TOWNSHIP 84 NORTH, RANGE 1 WEST OF THE 5TH PRINCIPAL  
MERIDIAN, JONES COUNTY, IOWA.

**CORNERS TO BE INDEXED**

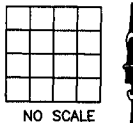
CORNER SECTION TOWNSHIP RANGE  
OFFICE FILE NO.



PREVIOUSLY RECORDED IN BOOK \_\_\_\_\_, PAGE \_\_\_\_\_  
MONUMENT DESCRIPTION AND HOW ESTABLISHED \_\_\_\_\_

**CORNERS TO BE INDEXED**

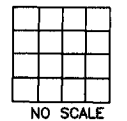
CORNER SECTION TOWNSHIP RANGE  
OFFICE FILE NO.



PREVIOUSLY RECORDED IN BOOK \_\_\_\_\_, PAGE \_\_\_\_\_  
MONUMENT DESCRIPTION AND HOW ESTABLISHED \_\_\_\_\_

**CORNERS TO BE INDEXED**

CORNER SECTION TOWNSHIP RANGE  
OFFICE FILE NO.



PREVIOUSLY RECORDED IN BOOK \_\_\_\_\_, PAGE \_\_\_\_\_  
MONUMENT DESCRIPTION AND HOW ESTABLISHED \_\_\_\_\_

~~I hereby declare that this plat, survey or report was made by me or under my direct personal supervision and that I am a duly registered Land Surveyor under the laws of the State of Iowa.~~

Signed: \_\_\_\_\_

SEAL

JONES COUNTY  
ENGINEER'S OFFICE  
  
19501 HWY. 64,  
ANAMOSA, IOWA,  
52205 (319)462-3785