

UNITED STATES PUBLIC LAND SURVEY CORNER CERTIFICATE

OF

Land Survey Monuments situated in Section 2, Township 84N, Range 1W, of the Fifth Principal Meridian, Jones County, Iowa.
 Previously recorded in Engineer's Office ~~in County Recorder's Office~~

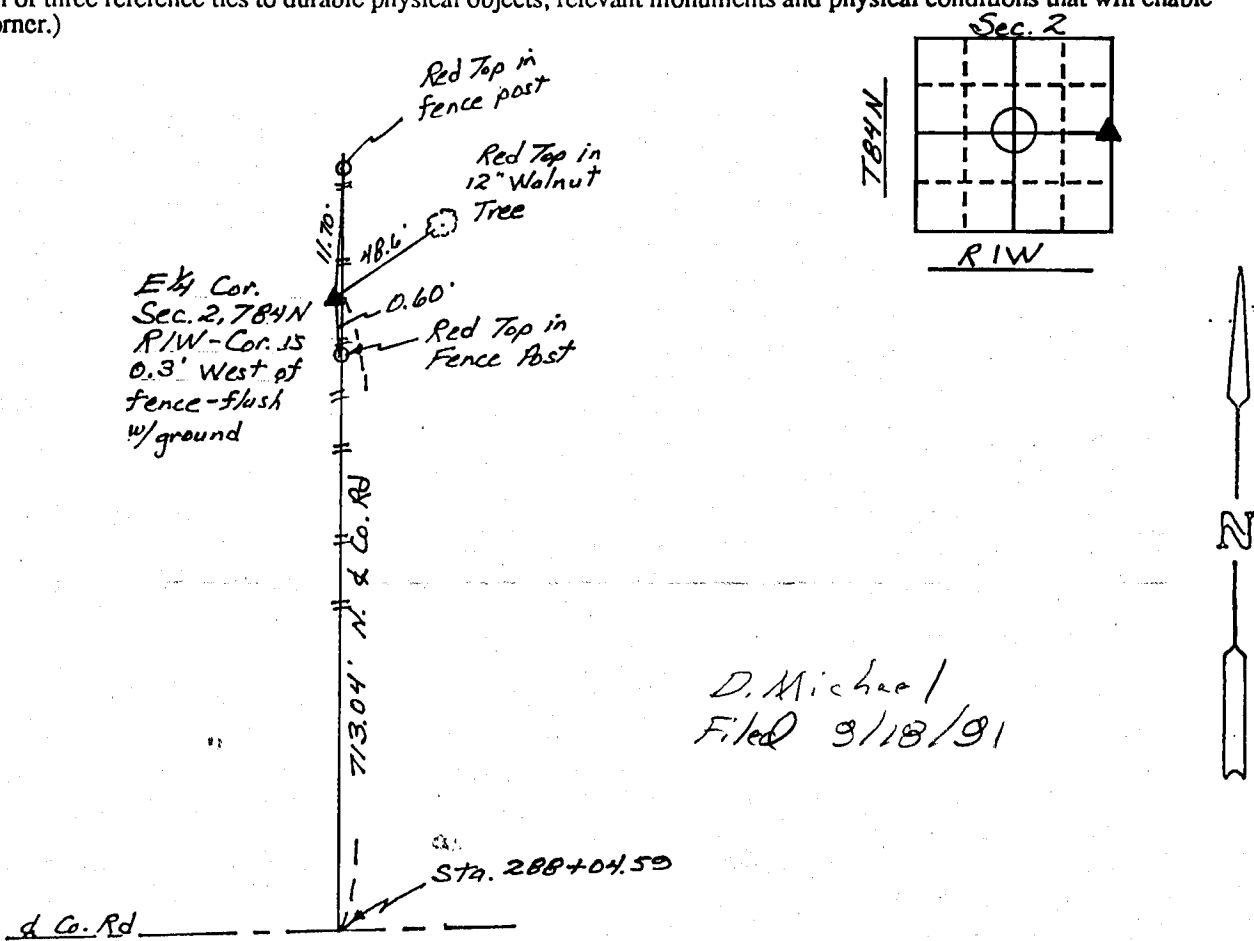
(book, page, document number, etc.)

(Show reason for preparing this certificate, the evidence and detailed procedures used in establishing the corner positions and monumentation found or placed.)

Monument Description and Remarks: Section corner had previously been referenced in the Engineer's office but land owners had dozed the fence line and destroyed the corner. Set 3/4" x 24" iron rod at recorded distances in the Engineer's office. Corner is in the new fence line and flush with the ground.

PLAN - VIEW

(Show a minimum of three reference ties to durable physical objects, relevant monuments and physical conditions that will enable recovery of the corner.)

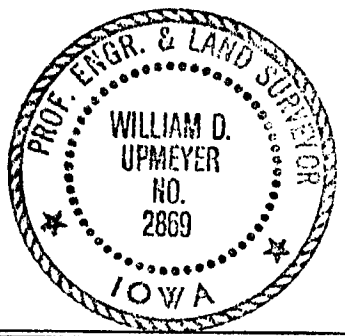


Not To Scale

I hereby certify that the survey work was completed and this certificate was prepared by me or under my direct personal supervision and that I am a duly registered land surveyor under the laws of the state of Iowa.

Signature: William D. Upmeyer
 Name typed or printed: William D. Upmeyer
 Date: 8-29-91 Reg. No. 2869

SEAL



Corners	List Corners to be Indexed		
	Section	Twp	Range
E 1/4	2	84N	1W