

2000 1639

FILED
RECORDERS OFFICE
JONES COUNTY IOWA

00 MAY 24 PM 2:50

MARIE KRUTZFIELD
RECORDER

DENNIS R. KUNZE

BOX 3150 CEDAR RAPIDS, IOWA 52406-3150

319-364-0235

UNITED STATES PUBLIC LAND SURVEY CORNER CERTIFICATE OF

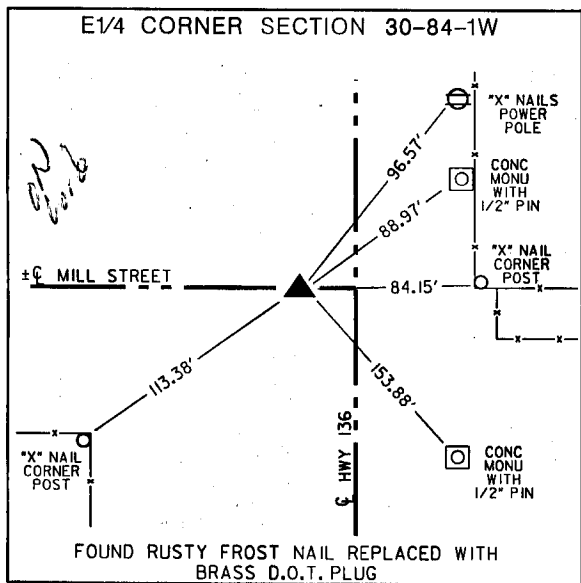
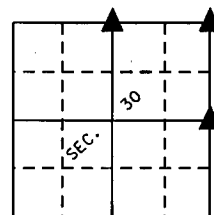
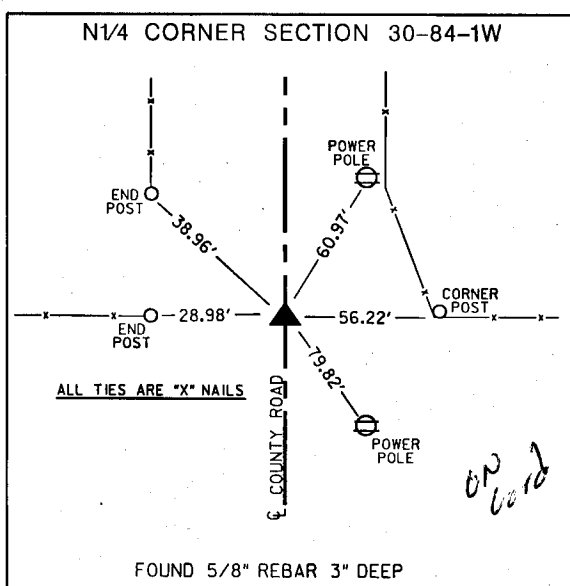
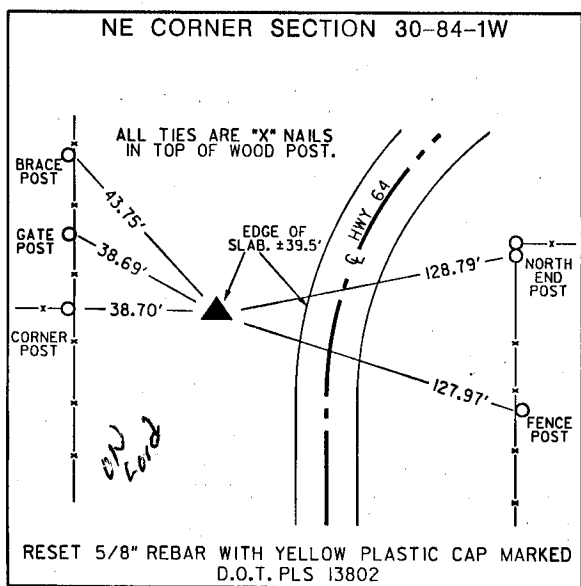
LAND SURVEY MONUMENTS SITUATED IN SECTION 30, TOWNSHIP 84 NORTH, RANGE 1 WEST, OF THE 5TH PRINCIPAL MERIDIAN JONES COUNTY IOWA.

PREVIOUSLY RECORDED IN NONE IN COUNTY RECORDER'S OFFICE.

(book, page, document number, etc.)

(Show reason for preparing this certificate, the evidence and detailed procedures used in establishing the corner positions and monumentation found or placed.)

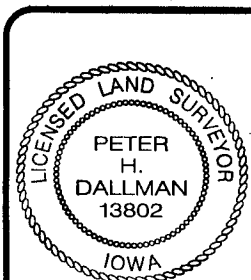
MONUMENT DESCRIPTION AND REMARKS: The N.E. corner was reset using a distance-distance intersection from the N1/4 and E1/4 corners. A brass plug was reset at a found frost nail at the E1/4 corner. The N1/4 corner was found using existing references.



- x- = FENCE
- S.C.M. = STANDARD CONCRETE MONUMENT
- ⊗ = POWER POLE
- ▲ = SECTION CORNER
- ☁ = TREE

LAND CORNERS TO BE RECORDED

Corners	Section	Twp.	Range
NE	30	T84N	R1W
N1/4	30	T84N	R1W
E1/4	30	T84N	R1W



I hereby certify that this land surveying document was prepared by me or under my direct personal supervision and that I am a duly licensed Land Surveyor under the laws of the State of Iowa.

Peter H. Dallman 5-24-2000
PETER H. DALLMAN DATE:

License number 13802

My license renewal date is December 31, 2000

Pages or sheets covered by this seal:

This Sheet only