

MARIE KRUTZFIELD, RECORDER
 JONES COUNTY, IOWA

Prepared by Wm. Burger Land Surveyors 510 3rd Street West Court, Worthington, Iowa Phone 563 - 855 2028

UNITED STATES PUBLIC LAND SURVEY CORNER CERTIFICATE

Land Survey Monuments situated in Section 31, Township 84N, Range 1W, of the Fifth Principal Meridian, Jones County, Iowa. Previously recorded in SEE NOTE in the Office of the County Recorder

Monument Description and Remarks:

CENTER OF SECTION - FOUND 5/8" IRON ROD W/ NO CAP

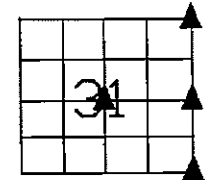
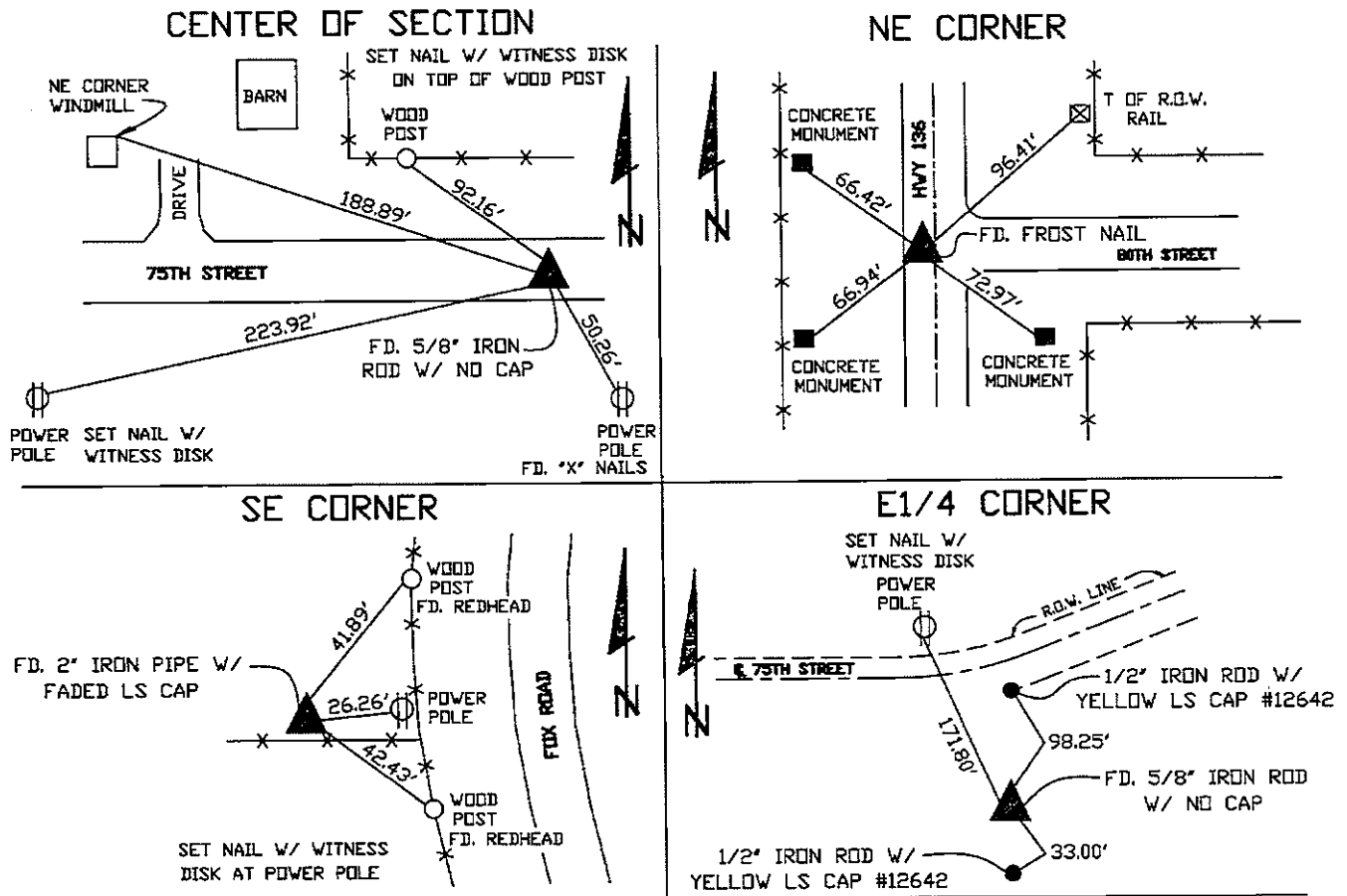
NE CORNER - FOUND FROST NAIL

SE CORNER - FOUND 2" IRON PIPE W/ FADED LS CAP

E1/4 CORNER - FOUND 5/8" IRON ROD W/ NO CAP

NOTE: THE CENTER OF SECTION WAS PREVIOUSLY RECORDED IN THE OFFICE OF THE JONES COUNTY RECORDER BOOK 370, PAGE 268
 THE E1/4 CORNER WAS PREVIOUSLY RECORDED IN THE OFFICE OF THE JONES COUNTY RECORDER BOOK 370, PAGE 265

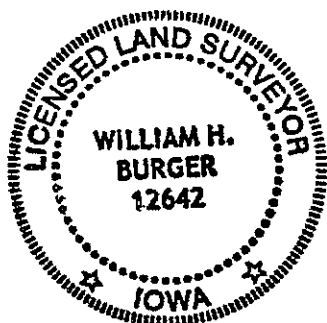
PLAN VIEW



SEC. 31 TWP. 84N RANGE 1W

CORNERS TO BE INDEXED

CENTER OF SECTION	31	84N	1W
NE CORNER	31	84N	1W
SE CORNER	31	84N	1W
E1/4 CORNER	31	84N	1W



I hereby certify that this land surveying document was prepared and related survey work was performed by me or under my direct personal supervision and that I am a duly licensed Land Surveyor under the laws of the State of Iowa.

William H. Burger 9/28/06
 William H. Burger Date

License number 12642

My license renewal date is December 31, 2006

Pages or Sheets covered by this seal: Sheet 1 of 1

UNITED STATES PUBLIC LAND SURVEY CORNER CERTIFICATE

OF

Land Survey Monuments situated in Section 31, Township 84N, Range 1W, of the Fifth Principal Meridian, JONES County, Iowa.
Previously recorded in N/A in County Recorder's Office.

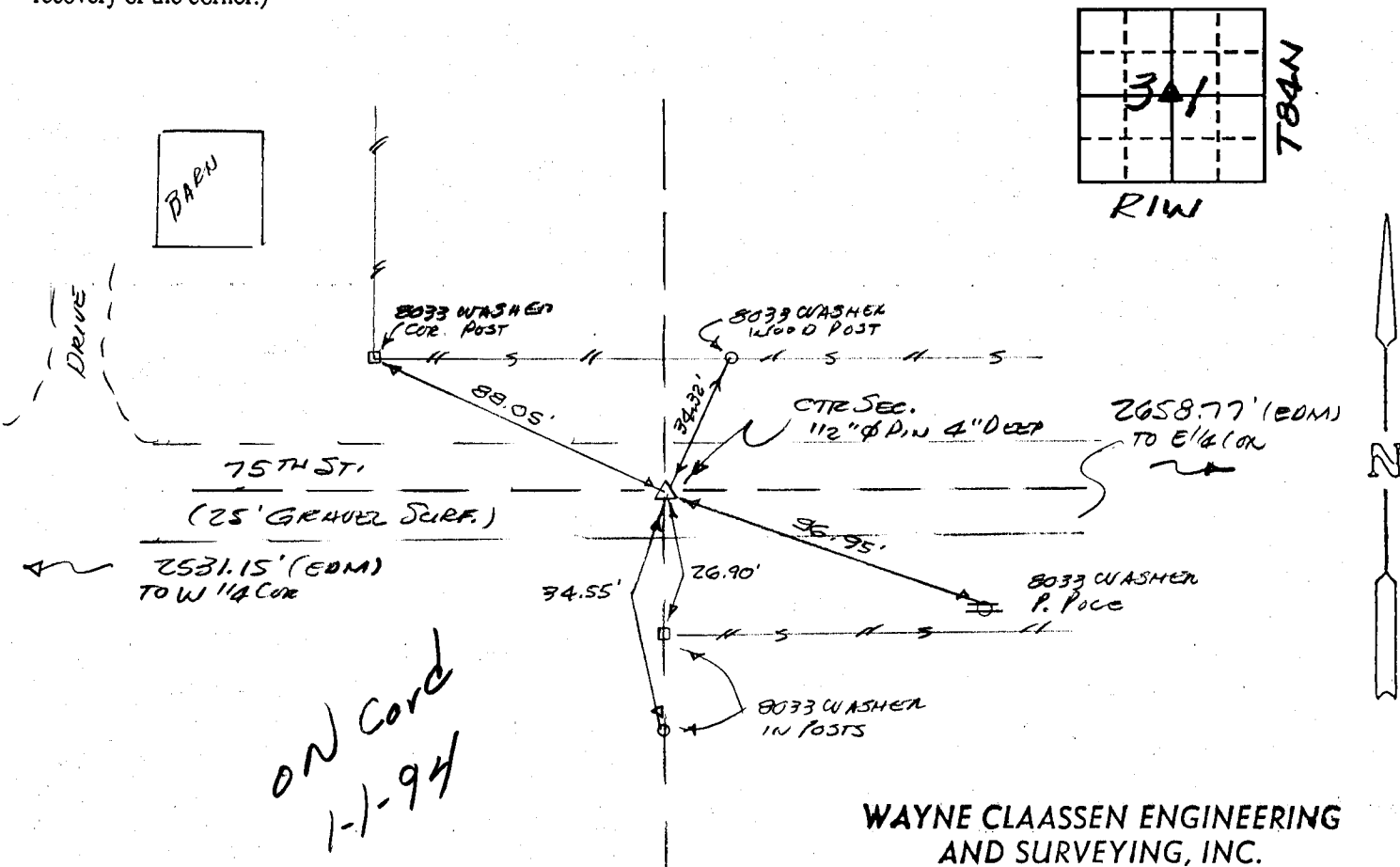
(book, page, document number, etc.)

(Show reason for preparing this certificate, the evidence and detailed procedures used in establishing the corner positions and monumentation found or placed.)

Monument Description and Remarks: FOUND 1/2" Ø SOLID PIN 4" DEEP PER JONES
COUNTY TIES OF 11-29-79, REF BOOK JONES Co. 276-4.

PLAN - VIEW

(Show a minimum of three reference ties to durable physical objects, relevant monuments and physical conditions that will enable recovery of the corner.)



WAYNE CLAASSEN ENGINEERING
AND SURVEYING, INC.
2709 UNIVERSITY AVE.
P.O. BOX 898
WATERLOO, IA 50704

439-10

I hereby certify that the survey work was completed and this certificate was prepared by me or under my direct personal supervision and that I am a duly registered land surveyor under the laws of the state of Iowa.

Signature: [Signature]
Name typed or printed: F. WILLIAM KING
Date: 11-5-94 Reg. No. 8033

Corners	List Corners to be Indexed Section	Twp	Range
CTR	31	84N	1W

SEAL

