

MARIE KRUTZFIELD, RECORDER
JONES COUNTY, IOWA

Prepared by Wm. Burger LandSurveyors 510 3rd Street West Court, Worthington, Iowa Phone 563 - 855 2028

UNITED STATES PUBLIC LAND SURVEY CORNER CERTIFICATE

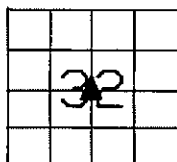
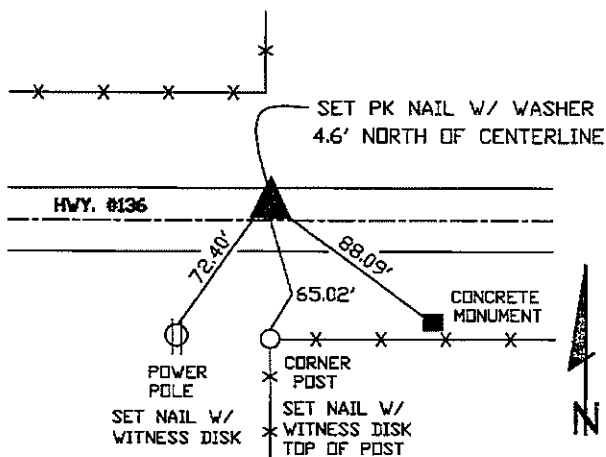
Land Survey Monuments situated in Section 32, Township 84N, Range 1W, of the Fifth Principal Meridian, Jones County, Iowa. Previously recorded in N/A in the Office of the County Recorder

Monument Description and Remarks: (No Corner Certificates found at the County Recorders Office)

CENTER OF SECTION - SET PK NAIL W/ WASHER - USED D.O.T. ROAD PLANS TO RESET THIS CORNER

PLAN VIEW

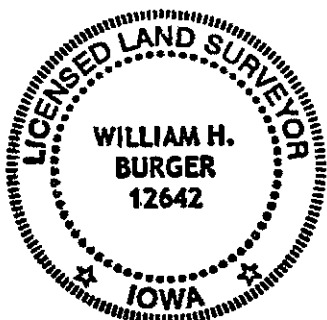
CENTER OF SECTION



SEC. 32 TWP. 84N RANGE 1W

CORNERS TO BE INDEXED

CENTER OF SECTION 32 84N 1W



I hereby certify that this land surveying document was prepared and related survey work was performed by me or under my direct personal supervision and that I am a duly licensed Land Surveyor under the laws of the State of Iowa.

William H. Burger 9/26/06
William H. Burger Date

License number 12642
My license renewal date is December 31, 2006
Pages or Sheets covered by this seal: Sheet 1 of 1