

SECTION CORNER CERTIFICATE

OF
 LAND SURVEY MONUMENTS SITUATED IN SECTION 35, TOWNSHIP 84 NORTH,
 RANGE 1 WEST, OF THE FIFTH PRINCIPAL MERIDIAN, JONES, COUNTY, IOWA.

PREVIOUSLY RECORDED IN BOOK _____ AT PAGE _____

FOR RECORDER'S USE

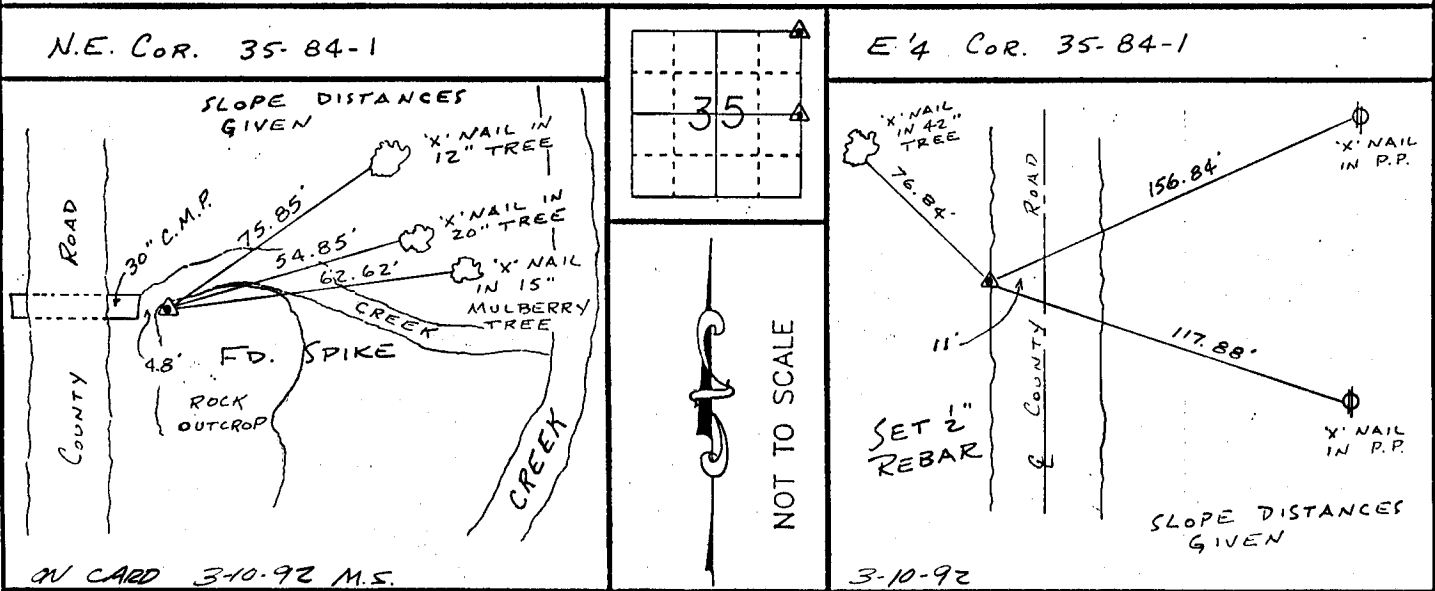
REASON FOR PREPARING CERTIFICATE:

- A) THERE IS NO CERTIFICATE FOR THE CORNER ON FILE WITH THE RECORDER OF THE COUNTY IN WHICH THE CORNER IS LOCATED.
- B) CORNER POSITION DIFFERS FROM THAT SHOWN IN THE PUBLIC RECORDS OF THE COUNTY IN WHICH THE CORNER IS LOCATED.
- C) THE CORNER MONUMENT HAS BEEN REPLACED OR MODIFIED.
- D) THE REFERENCE TIES REFERRED TO IN AN EXISTING PUBLIC RECORD ARE INCORRECT.

MONUMENT DESCRIPTION AND REMARKS :

N.E. CORNER SECTION 35-T84N-R1W FOUND SPIKE IN EAST R.O.W.
 DITCH 4.8' EAST OF 30" C.M.P.
 E'4 CORNER SECTION 35-T84N-R1W SET 1/2" REBAR WITH L.S.
 CAP # 11954 11' WEST OF E OF COUNTY ROAD 2" DEEP

RECOVERY TIE DRAWING



I, DANIEL J. JOHNSON, CERTIFY THAT THE CORNER LOCATION(S) SHOWN ON THIS RECORD WERE DETERMINED BY ME OR UNDER MY DIRECTION AND CONTROL AND THAT THIS U.S. PUBLIC LAND SURVEY MONUMENT RECORD IS CORRECT AND COMPLETE TO THE BEST OF MY KNOWLEDGE AND BELIEF.

Daniel J. Johnson 3-2-92
 DANIEL J. JOHNSON L.S. NO. 11954 DATE

DZMOML	<input type="checkbox"/> GOVERNMENT CORNER <input type="checkbox"/> 5/8" THE PIN SET	SHEET TITLE: U.S. PUBLIC LAND SURVEY RECORD		HALL AND HALL ENGINEERS, INC. 226 29TH STREET DRIVE S.E. CEDAR RAPIDS, IOWA 52403 319-362-9548				
	<input type="checkbox"/> CENTERLINE <input type="checkbox"/> EXISTING FENCE LINE <input type="checkbox"/> R.O.W. LINE	PROJECT TITLE: JONES COUNTY PROJECT # 575		FNO B 0T23	PNO PROJ 4579			
DWN	R.W.B.	KIC	D.J.J.	APP	DATE 2-14-92	SCALE NONE	FNO B 0T23	PNO PROJ 4579

THIS IS NOT A CERTIFICATION

JONES COUNTY ENGINEER'S OFFICE, 19501 HWY. 64, ANAMOSA, IOWA, 52205 (319)462-3785

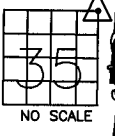
UNITED STATES PUBLIC LAND SURVEY CORNER CERTIFICATE

LAND SURVEY MONUMENTS SITUATED IN SECTION 35, TOWNSHIP 84
NORTH, RANGE 1 WEST OF THE 5TH P.M., JONES COUNTY, IOWA

CORNERS TO BE INDEXED

CORNER NORTHEAST	SECTION 35	TOWNSHIP 84N	RANGE 1W
---------------------	---------------	-----------------	-------------

OFFICE FILE NO. _____
84135e_020204.jpg



NO SCALE

FOUND SPIKE PER DAN JOHNSON RECORD TIES. (IN COMPUTER) SET 5/8"X24" IRON PIN W/TOP 8" ABOVE SURFACE.

NORTHEAST CORNER SECTION 35, TOWNSHIP 84 NORTH, RANGE 1 WEST OF THE 5TH PRINCIPAL MERIDIAN, JONES COUNTY, IOWA.

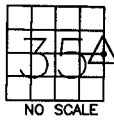
824

PREVIOUSLY RECORDED IN BOOK _____, PAGE _____
MONUMENT DESCRIPTION AND HOW ESTABLISHED _____

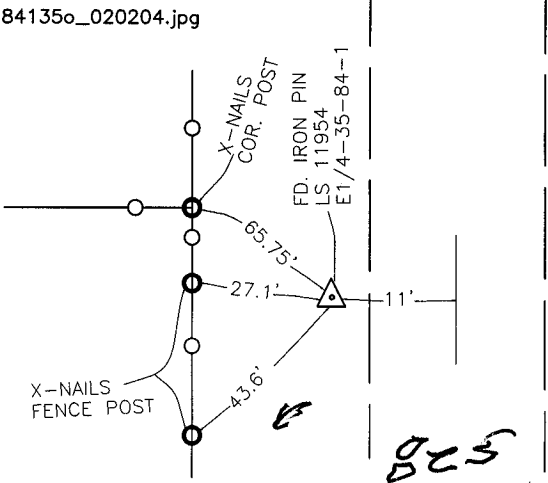
CORNERS TO BE INDEXED

CORNER E-QUARTER	SECTION 35	TOWNSHIP 84N	RANGE 1W
---------------------	---------------	-----------------	-------------

OFFICE FILE NO. _____
84135o_020204.jpg



NO SCALE



825

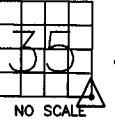
PREVIOUSLY RECORDED IN BOOK _____, PAGE _____
MONUMENT DESCRIPTION AND HOW ESTABLISHED FOUND

IRON PIN LS 11954 PER RECORD CERTIFICATE BY DAN JOHNSON (IN COMPUTER ARC VIEW) SET NEW REFERENCE POINTS AND TIED OUT AS INDICATED. EAST QUARTER CORNER, SECTION 35, TOWNSHIP 84 NORTH, RANGE 1 WEST OF THE 5TH PRINCIPAL MERIDIAN, JONES COUNTY, IOWA. (OLD TIES DESTROYED DURING BRIDGE CONSTRUCTION)

CORNERS TO BE INDEXED

CORNER SOUTHEAST	SECTION 35	TOWNSHIP 84N	RANGE 1W
---------------------	---------------	-----------------	-------------

OFFICE FILE NO. _____
84135y_020204.jpg



NO SCALE

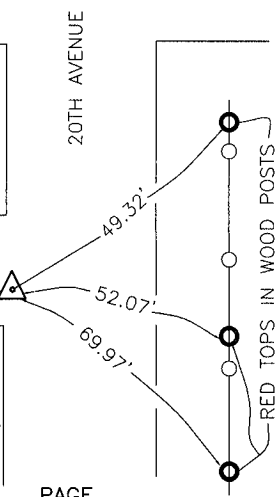
72ND STREET

20TH AVENUE

COUNTY CREW REF:
PAT POWELL
BK 20(1) P63
6-18-97

FIELD INTRY

SET 5/8"X24" REBAR SE-35-84-1



SEE DAN JOHNSON CORNER CERTIFICATE & THE INDEX CARD IN THE ENGINEER'S OFFICE.

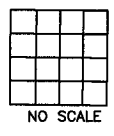
PREVIOUSLY RECORDED IN BOOK _____, PAGE _____
MONUMENT DESCRIPTION AND HOW ESTABLISHED REPLACED

DAN JOHNSON MONUMENT LS11954 THAT WAS LOST DURING CONSTRUCTION W/5/8"X24" REBAR AND SET NEW REFERENCE POINTS. SEE DAN JOHNSON CORNER CERTIFICATE. SOUTHEAST CORNER OF SECTION 35, TOWNSHIP 84 NORTH, RANGE 1 WEST OF THE 5TH PRINCIPAL MERIDIAN, JONES COUNTY, IOWA.

CORNERS TO BE INDEXED

CORNER	SECTION	TOWNSHIP	RANGE
--------	---------	----------	-------

OFFICE FILE NO. _____



NO SCALE

PREVIOUSLY RECORDED IN BOOK _____, PAGE _____
MONUMENT DESCRIPTION AND HOW ESTABLISHED _____

~~I hereby declare that this plat, survey or report was made by me or under my direct personal supervision and that I am a duly registered Land Surveyor under the laws of the State of Iowa.~~

Signed: _____

SEAL

JONES COUNTY
ENGINEER'S OFFICE

19501 HWY. 64,
ANAMOSA, IOWA,
52205 (319)462-3785