

2006 0834

FILED  
RECORDERS OFFICE  
JONES COUNTY IOWA

06 MAR -8 PM 3:50

MARIE KRUTZFIELD  
RECORDER 7.00 PD

J.D. TJEPKES, LS. 14807, 23428 RIDGE ROAD, ANAMOSA, IOWA, 52205 (319-462-6067)

# UNITED STATES PUBLIC LAND SURVEY CORNER CERTIFICATE

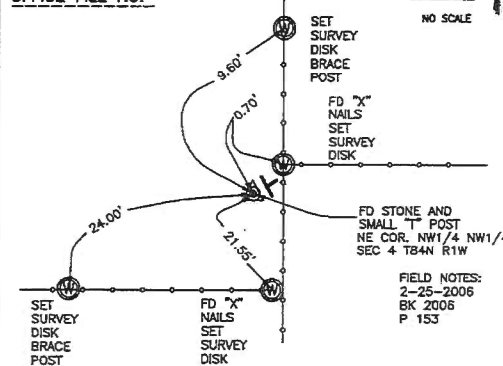
LAND SURVEY MONUMENTS SITUATED IN SECTION 4, TOWNSHIP 84  
NORTH, RANGE 1 WEST OF THE 5TH P.M., JONES COUNTY, IOWA

### CORNERS TO BE INDEXED

CORNER SECTION TOWNSHIP RANGE  
NE COR. 4 84N 1W  
NW1/4 NW1/4  
OFFICE FILE NO. \_\_\_\_\_



NO SCALE



PREVIOUSLY RECORDED IN BOOK NA, PAGE NA  
MONUMENT DESCRIPTION AND HOW ESTABLISHED \_\_\_\_\_  
FOUND A STONE AND SMALL "T" POST ALONG SIDE. FOUND "X" NAILS IN AREA. OLD VACATED ROAD WENT THROUGH HERE. POSSIBLE SOUTH ROW FENCE STILL VISIBLE. NO TIES ON RECORD. TIES AS INDICATED FOR NE CORNER NW1/4 OF THE NW1/4 SECTION 4 T84N R1W.

### CORNERS TO BE INDEXED

CORNER SECTION TOWNSHIP RANGE  
OFFICE FILE NO. \_\_\_\_\_



NO SCALE

PREVIOUSLY RECORDED IN BOOK \_\_\_\_\_, PAGE \_\_\_\_\_  
MONUMENT DESCRIPTION AND HOW ESTABLISHED \_\_\_\_\_

### CORNERS TO BE INDEXED

CORNER SECTION TOWNSHIP RANGE  
OFFICE FILE NO. \_\_\_\_\_



NO SCALE

PREVIOUSLY RECORDED IN BOOK \_\_\_\_\_, PAGE \_\_\_\_\_  
MONUMENT DESCRIPTION AND HOW ESTABLISHED \_\_\_\_\_

### CORNERS TO BE INDEXED

CORNER SECTION TOWNSHIP RANGE  
OFFICE FILE NO. \_\_\_\_\_



NO SCALE

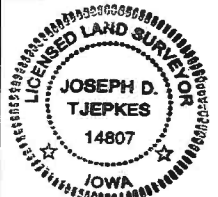
PREVIOUSLY RECORDED IN BOOK \_\_\_\_\_, PAGE \_\_\_\_\_  
MONUMENT DESCRIPTION AND HOW ESTABLISHED \_\_\_\_\_

I hereby declare that this plot, survey or report was made by me or under my direct personal supervision and that I am a duly registered Land Surveyor under the laws of the State of Iowa.

Signed: \_\_\_\_\_

*J. D. Tjepkes 3-07-06*  
Joseph D. Tjepkes L.S. Iowa Reg. No. 14807  
My Registration Renewal Date is December 31, 2006

SEAL



J.D. TJEPKES LS 14807  
23428 RIDGE ROAD  
ANAMOSA, IOWA, 52205  
(319)-462-6067