

2004 3178

FILED
RECORDERS OFFICE
JONES COUNTY IOWA

04 AUG 25 AM 11:03

MARIE KRUTZFIELD
RECORDER NO FEE

J.D. Tjepkes, L.S. JONES COUNTY ENGINEER'S OFFICE, 19501 HWY. 64, ANAMOSA, IOWA, 52205 (319)462-3785

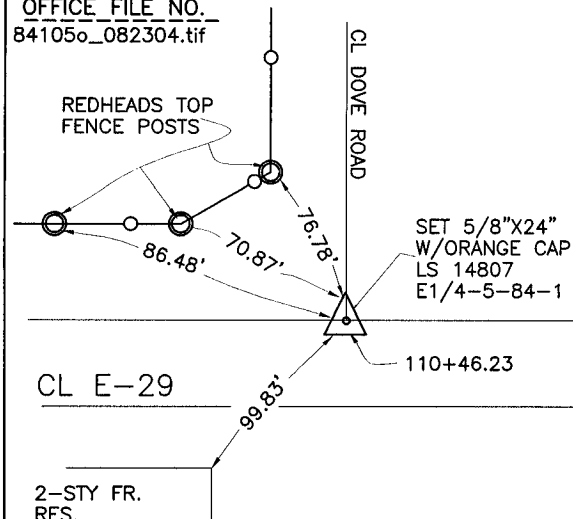
UNITED STATES PUBLIC LAND SURVEY CORNER CERTIFICATE

LAND SURVEY MONUMENTS SITUATED IN SECTION 4, TOWNSHIP 84
NORTH, RANGE 1 WEST OF THE 5TH P.M., JONES COUNTY, IOWA

CORNERS TO BE INDEXED

CORNER SECTION TOWNSHIP RANGE
E-QUARTER 5 84N 1W
OFFICE FILE NO.
84105o_082304.tif

(792)



THE COUNTY SURVEY CREW FOUND A 5"X10"X16" LIMESTONE BELOW THE ROAD SURFACE AT THIS LOCATION IN 1987. SET 5/8"X24" REBAR ABOVE AND TIED WITH SAME TIE POINTS AS INDICATED. BRAIN ENGINEERING RECOVERED THE REBAR IN 1996. USED SAME TIE POINTS AND FILED A CORNER CERTIFICATE. MONUMENT DESTROYED DURING PAVING PROJECT IN 1999. COUNTY DRILLED AND SET 5/8"X24" REBAR WITH ORANGE CAP LS 14807. USED SAME TIE POINTS FOR REFERENCE.

PREVIOUSLY RECORDED IN BOOK 411, PAGE 88
MONUMENT DESCRIPTION AND HOW ESTABLISHED SET
5/8"X24" REBAR W/ORANGE CAP LS 14807 IN CONCRETE PAVEMENT
AFTER PAVING PROJECT FM-53(26)--55-53. MONUMENT SET FROM
PREVIOUS TIES (BRAIN ENGINEERING) AND COUNTY STATION AND
OFFSET. EAST QUARTER CORNER SECTION 5, TOWNSHIP 84 NORTH,
RANGE 1 WEST OF THE 5TH PRINCIPAL MERIDIAN, JONES COUNTY, IOWA.

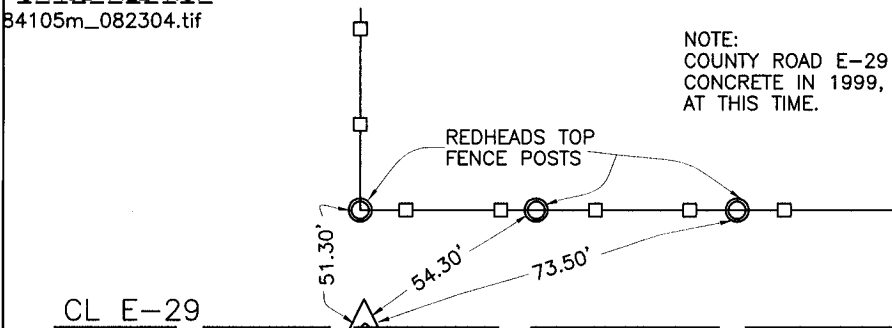
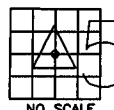
DATE OF FIELD WORK:
1-06-2000
UPDATED 8-23-04

84105o_082304.tif

CORNERS TO BE INDEXED

CORNER SECTION TOWNSHIP RANGE
CENTER 5 84N 1W
OFFICE FILE NO.
84105m_082304.tif

DATE OF FIELD WORK:
JANUARY-2000
UPDATED 8-23-04



NOTE:
COUNTY ROAD E-29 WAS PAVED WITH
CONCRETE IN 1999, MONUMENTS DESTROYED
AT THIS TIME.

(1292)

84105m_082304.tif

STA. 84+27.65 (FM-53[26]--55-53)
SET 5/8"X24" REBAR W/ORANGE CAP
LS 14807. CENTER-5-84-1

PREVIOUSLY RECORDED IN BOOK N/A, PAGE N/A
MONUMENT DESCRIPTION AND HOW ESTABLISHED SET
5/8"X24" REBAR WITH ORANGE CAP LS 14807 IN CONCRETE
PAVING. TIES AS INDICATED. COUNTY SURVEY CREW FOUND 4"X8"X11"
LIMESTONE 1.5' BELOW ROAD SURFACE AT THIS LOCATION IN 1987.
SAME TIES USED IN 1987 AS THOSE INDICATED. CENTER SECTION 5,
TOWNSHIP 84 NORTH, RANGE 1 WEST OF THE 5TH PRINCIPAL MERIDIAN,
JONES COUNTY, IOWA.

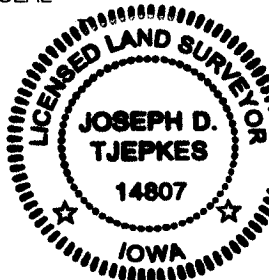
I hereby declare that this plat, survey or report was made by me or under my direct personal supervision and that I am a duly registered Land Surveyor under the laws of the State of Iowa.

Signed:

Joseph D. Tjepkes 8-23-04

Joseph D. Tjepkes L.S. Iowa Reg. No. 14807
My Registration Renewal Date is December 31, 2004

SEAL



J.D. Tjepkes LS 14807
JONES COUNTY
ENGINEER'S OFFICE

19501 HWY. 64,
ANAMOSA, IOWA,
52205 (319)462-3785

F

THIS IS NOT A CERTIFICATION

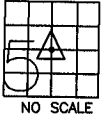
JONES COUNTY ENGINEER'S OFFICE, 19501 HWY. 64, ANAMOSA, IOWA, 52205 (319)462-3785

UNITED STATES PUBLIC LAND SURVEY CORNER CERTIFICATE

LAND SURVEY MONUMENTS SITUATED IN SECTION 5, TOWNSHIP 84
NORTH, RANGE 1 WEST OF THE 5TH P.M., JONES COUNTY, IOWA

CORNERS TO BE INDEXED

CORNER SECTION TOWNSHIP RANGE
CENTER 5 84N 1W
OFFICE FILE NO.
84105m_123103.jpg



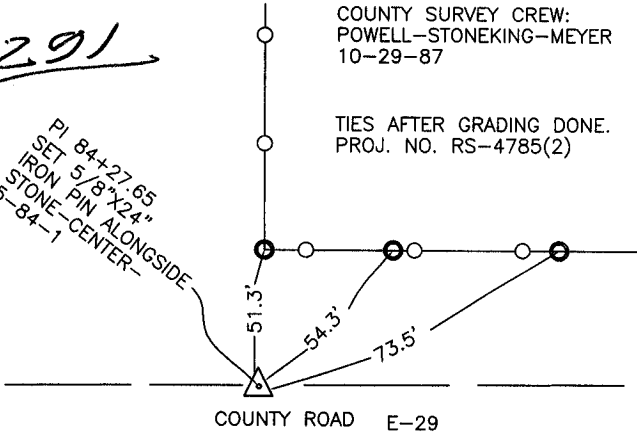
NO SCALE

COUNTY SURVEY CREW:
POWELL-STONEKING-MEYER
10-29-87

TIES AFTER GRADING DONE.
PROJ. NO. RS-4785(2)

1291

PI 84+27.65
SET 5/8" X 24"
IRON PIN ALONGSIDE
STONE-CENTER-
5-84-1

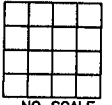


COUNTY ROAD E-29

PREVIOUSLY RECORDED IN BOOK _____, PAGE _____
MONUMENT DESCRIPTION AND HOW ESTABLISHED FOUND
4"X8"X11" LIMESTONE 1.5' BELOW SURFACE IN BLACK DIRT LYING
ON IT'S SIDE, 2.5' EAST OF FENCE LINE NORTH. CENTER OF SECTION
5, TOWNSHIP 84 NORTH, RANGE 1 WEST OF THE 5TH PRINCIPAL
MERIDIAN, JONES COUNTY, IOWA.

CORNERS TO BE INDEXED

CORNER SECTION TOWNSHIP RANGE
OFFICE FILE NO.

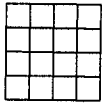


NO SCALE

PREVIOUSLY RECORDED IN BOOK _____, PAGE _____
MONUMENT DESCRIPTION AND HOW ESTABLISHED _____

CORNERS TO BE INDEXED

CORNER SECTION TOWNSHIP RANGE
OFFICE FILE NO.

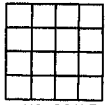


NO SCALE

PREVIOUSLY RECORDED IN BOOK _____, PAGE _____
MONUMENT DESCRIPTION AND HOW ESTABLISHED _____

CORNERS TO BE INDEXED

CORNER SECTION TOWNSHIP RANGE
OFFICE FILE NO.



NO SCALE

PREVIOUSLY RECORDED IN BOOK _____, PAGE _____
MONUMENT DESCRIPTION AND HOW ESTABLISHED _____

~~I hereby declare that this plat, survey or report
was made by me or under my direct personal
supervision and that I am a duly registered Land
Surveyor under the laws of the State of Iowa.~~

Signed:

SEAL

JONES COUNTY
ENGINEER'S OFFICE

19501 HWY. 64,
ANAMOSA, IOWA,
52205 (319)462-3785