

FILED  
RECORDERS OFFICE  
JONES COUNTY IOWA

04 SEP -2 AM 11:21

MARIE KRUTZFIELD  
RECORDER 7.00 pd

PREPARED BY

STEPHEN MICHAEL BRAIN, BRAIN ENGINEERING, INC., 1540 MIDLAND COURT NE, CEDAR RAPIDS, IOWA PH. (319) 294-9424

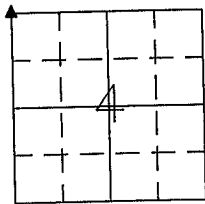
# UNITED STATES PUBLIC LAND SURVEY CORNER CERTIFICATE

LAND SURVEY MONUMENTS SITUATED IN SECTION 4, TOWNSHIP 84 NORTH  
RANGE 1 WEST OF THE 5TH P.M., JONES COUNTY, IOWA.

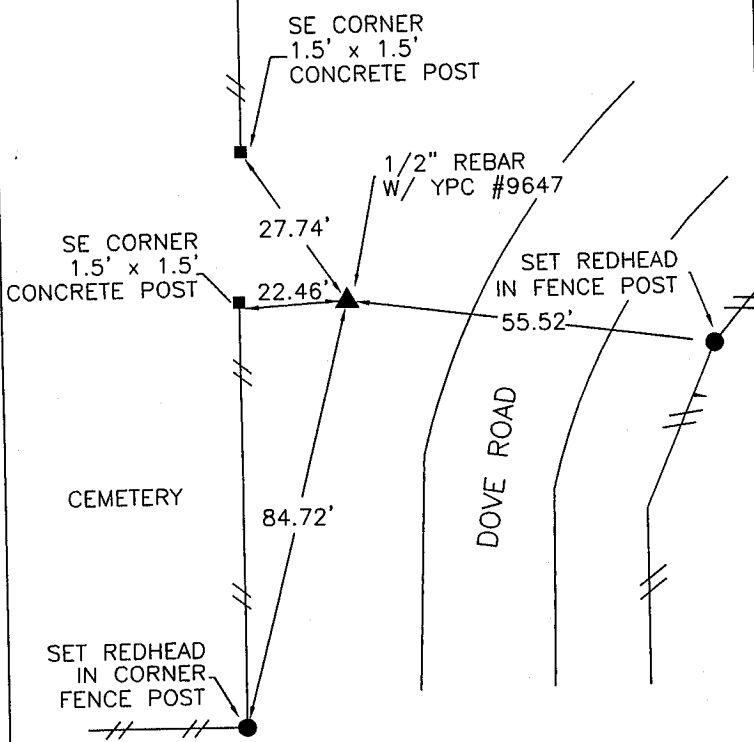
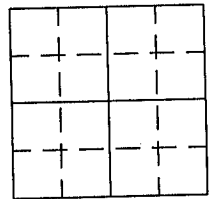
NO SCALE



NW CORNER



NO SCALE



1581  
84105e-090104.TIG

YPC- YELLOW PLASTIC CAP

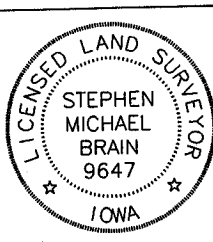
PREVIOUSLY RECORDED IN BOOK \_\_\_\_\_ PAGE \_\_\_\_\_

MONUMENT DESCRIPTION AND HOW ESTABLISHED \_\_\_\_\_

SET 1/2" REBAR WITH YPC #9647

PREVIOUSLY RECORDED IN BOOK \_\_\_\_\_ PAGE \_\_\_\_\_

MONUMENT DESCRIPTION AND HOW ESTABLISHED \_\_\_\_\_



I hereby certify that this land surveying document and the related survey work was performed by me or under my direct personal supervision and that I am a duly licensed Land Surveyor under the laws of the State of Iowa.  
Signed \_\_\_\_\_ Date 9/1/04  
Stephen Michael Brain, L.S.  
My License Renewal Date is December 31, 2004  
License Number 9647  
Pages or sheets covered by this seal: 1/1

- A. THERE IS NO CERTIFICATE FOR THE CORNER ON FILE WITH THE RECORDER OF THE COUNTY IN WHICH THE CORNER IS LOCATED
- B. THE SURVEYOR IN RESPONSIBLE CHARGE OF THE LAND SURVEYING ACCEPTS A CORNER POSITION WHICH DIFFERS FROM THAT SHOWN IN THE PUBLIC RECORDS OF THE COUNTY IN WHICH THE CORNER IS LOCATED.
- C. THE CORNER MONUMENT IS REPLACED OR MODIFIED IN ANY WAY.
- D. THE REFERENCE TIES REFERRED TO IN AN EXISTING PUBLIC RECORD ARE NOT CORRECT.

CORNERS TO BE INDEXED			
CORNER	SECTION	TOWNSHIP	RANGE
NW CORNER	4	T84N	R1W

**BRAIN ENGINEERING, INC.**  
1540 MIDLAND COURT NE  
CEDAR RAPIDS, IOWA 52402 32474-10  
(319) 294-9424