

2006. 0256

FILED  
RECORDERS OFFICE  
JONES COUNTY IOWA

05 JAN 19 AM 10:52

MARIE KRUTZFIELD  
RECORDER 7.00 Pd

Prepared by Wm. Burger LandSurveyors

510 3rd Street West Court, Worthington, Iowa

Phone 563 - 855 2028

### UNITED STATES PUBLIC LAND SURVEY CORNER CERTIFICATE

Land Survey Monuments situated in Section 6, Township 84N, Range 1W, of the Fifth Principal Meridian, Jones County, Iowa. Previously recorded in N/A in the Office of the County Recorder

Monument Description and Remarks: (No Corner Certificates found at the County Recorders Office)

NW CORNER - SET 1/2" IRON ROD W/ YELLOW LS CAP #12642 - USED D.O.T. CORNER TIES TO RESET THIS CORNER

NE CORNER - FOUND 5/8" IRON ROD W/ NO CAP

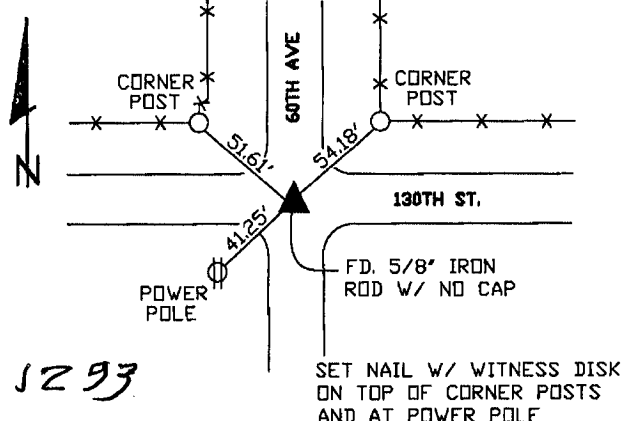
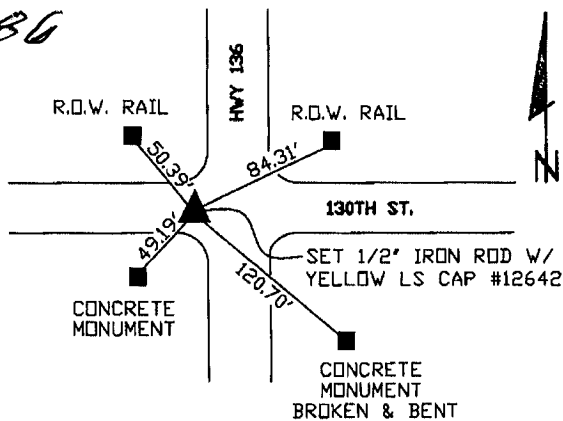
CENTER OF SECTION - FOUND 5/8" IRON ROD W/ NO CAP

N1/4 CORNER - SET 1/2" IRON ROD W/ LS CAP #12642 - USED INFORMATION FROM A SECTION CORNER SURVEY FOUND AT THE IOWA D.O.T. DISTRICT OFFICE

84106a-011606.tif  
NW CORNER

PLAN VIEW 84106a-011606.tif  
NE CORNER

1586

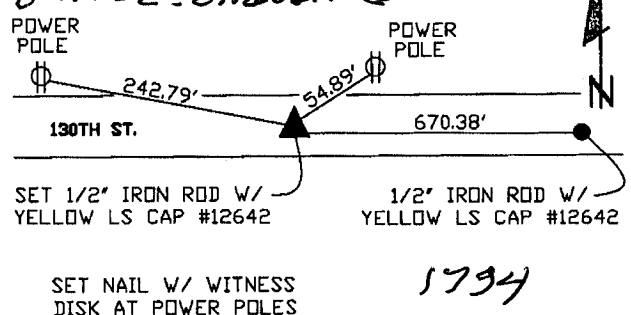
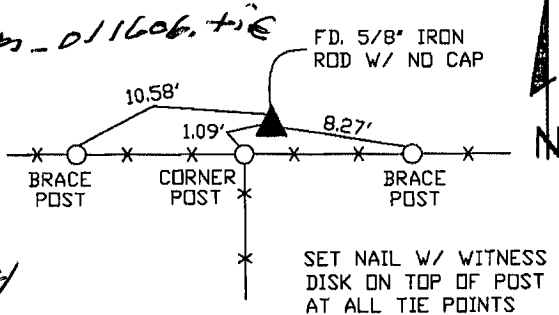


1293

CENTER OF SECTION

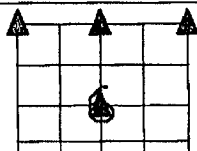
N1/4 CORNER

84106a-011606.tif



1294

1794



CORNERS TO BE INDEXED

NW CORNER	6	84N	1W
NE CORNER	6	84N	1W

# THIS IS NOT A CERTIFICATION

JONES COUNTY ENGINEER'S OFFICE, 19501 HWY. 64, ANAMOSA, IOWA, 52205 (319)462-3785

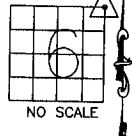
## UNITED STATES PUBLIC LAND SURVEY CORNER CERTIFICATE

LAND SURVEY MONUMENTS SITUATED IN SECTION 6, TOWNSHIP 84  
NORTH, RANGE 1 WEST OF THE 5TH P.M., JONES COUNTY, IOWA

**CORNERS TO BE INDEXED**

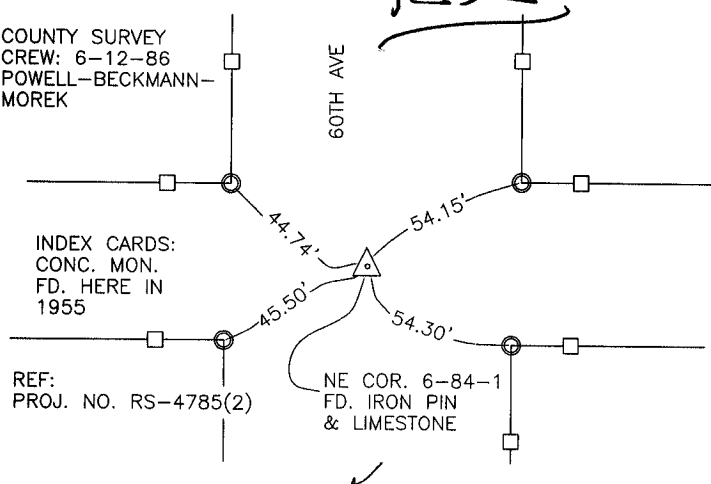
CORNER NORTHEAST	SECTION 6	TOWNSHIP 84N	RANGE 1W
---------------------	--------------	-----------------	-------------

OFFICE FILE NO. \_\_\_\_\_  
84106e\_010604.JPG



NO SCALE

1292



COUNTY SURVEY  
CREW: 6-12-86  
POWELL-BECKMANN-MOREK

INDEX CARDS:  
CONC. MON.  
FD. HERE IN  
1955

REF:  
PROJ. NO. RS-4785(2)

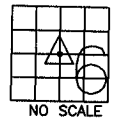
NE COR. 6-84-1  
FD. IRON PIN  
& LIMESTONE

PREVIOUSLY RECORDED IN BOOK \_\_\_\_\_, PAGE \_\_\_\_\_  
MONUMENT DESCRIPTION AND HOW ESTABLISHED FOUND 1"X18"  
IRON PIN WITH 6"X6"X12" LIMESTONE BELOW (24" BENEATH SURFACE.)  
SET 5/8"X18" PIN ABOVE ORIGINAL (4" BENEATH SURFACE). NORTHEAST  
CORNER SECTION 6, TOWNSHIP 84 NORTH, RANGE 1 WEST OF THE 5TH  
PRINCIPAL MERIDIAN, JONES COUNTY, IOWA.

**CORNERS TO BE INDEXED**

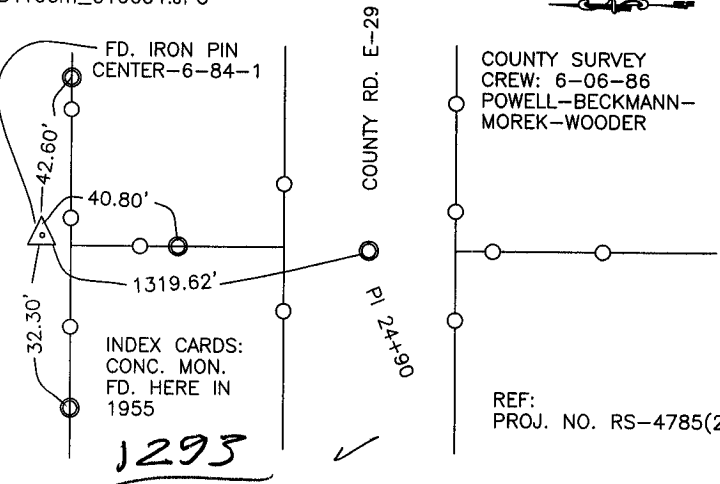
CORNER CENTER	SECTION 6	TOWNSHIP 84N	RANGE 1W
------------------	--------------	-----------------	-------------

OFFICE FILE NO. \_\_\_\_\_  
84106m\_010604.JPG



NO SCALE

1293



FD. IRON PIN  
CENTER-6-84-1

COUNTY SURVEY  
CREW: 6-06-86  
POWELL-BECKMANN-MOREK-WOODER

INDEX CARDS:  
CONC. MON.  
FD. HERE IN  
1955

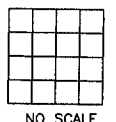
REF:  
PROJ. NO. RS-4785(2)

PREVIOUSLY RECORDED IN BOOK \_\_\_\_\_, PAGE \_\_\_\_\_  
MONUMENT DESCRIPTION AND HOW ESTABLISHED FOUND  
IRON PIN 6" BELOW SURFACE, 2.1' NORTHEAST OF CORNER POST.  
CENTER OF SECTION 6, TOWNSHIP 84 NORTH, RANGE 1 WEST OF  
THE 5TH PRINCIPAL MERIDIAN, JONES COUNTY, IOWA.

**CORNERS TO BE INDEXED**

CORNER	SECTION	TOWNSHIP	RANGE
--------	---------	----------	-------

OFFICE FILE NO. \_\_\_\_\_



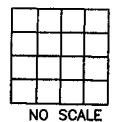
NO SCALE

PREVIOUSLY RECORDED IN BOOK \_\_\_\_\_, PAGE \_\_\_\_\_  
MONUMENT DESCRIPTION AND HOW ESTABLISHED \_\_\_\_\_  
\_\_\_\_\_  
\_\_\_\_\_

**CORNERS TO BE INDEXED**

CORNER	SECTION	TOWNSHIP	RANGE
--------	---------	----------	-------

OFFICE FILE NO. \_\_\_\_\_



NO SCALE

PREVIOUSLY RECORDED IN BOOK \_\_\_\_\_, PAGE \_\_\_\_\_  
MONUMENT DESCRIPTION AND HOW ESTABLISHED \_\_\_\_\_  
\_\_\_\_\_  
\_\_\_\_\_

~~I hereby declare that this plat, survey or report was made by me or under my direct personal supervision and that I am a duly registered Land Surveyor under the laws of the State of Iowa.~~

Signed: \_\_\_\_\_

SEAL

JONES COUNTY  
ENGINEER'S OFFICE

19501 HWY. 64,  
ANAMOSA, IOWA,  
52205 (319)462-3785