

PREPARED BY  
 CLARENCE J. WALTON, JONES COUNTY ENGINEER'S OFFICE, 19501 HWY. 64, ANAMOSA, IOWA, 52205 (319) 462-3785

# UNITED STATES PUBLIC LAND SURVEY CORNER CERTIFICATE

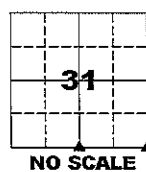
LAND SURVEY MONUMENTS SITUATED IN SECTION 31, TOWNSHIP 85 NORTH,  
 RANGE 4 WEST OF THE 5TH PRINCIPAL MERIDIAN, JONES COUNTY, IOWA.

**OFFICE FILE NO.**

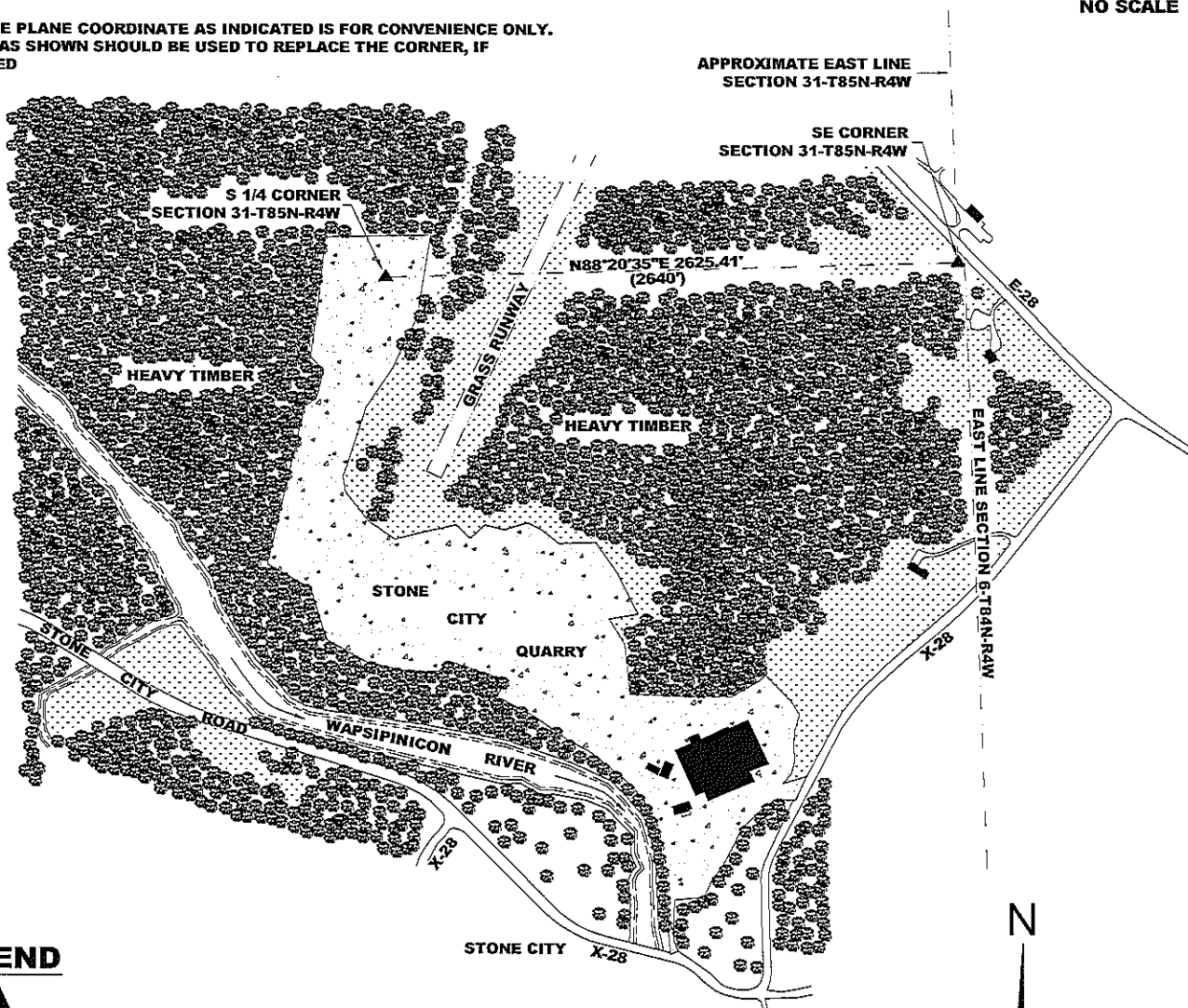
SE CORNER SECTION 31-T85N-R4W  
 STATE PLANE COORDINATE  
 NAD 83 IOWA NORTH  
 N 3514946.43  
 E 5505589.53

S 1/4 CORNER SECTION 31-T85N-R4W  
 STATE PLANE COORDINATE  
 NAD 83 IOWA NORTH  
 N 3514870.52  
 E 5502965.22

CORNER	SECTION	TOWNSHIP	RANGE
SE	31	T85N	R1W
S 1/4	31	T85N	R1W

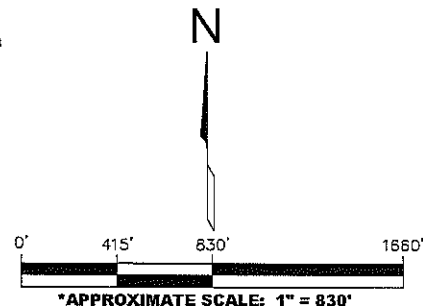


NOTE:  
 THE STATE PLANE COORDINATE AS INDICATED IS FOR CONVENIENCE ONLY.  
 THE TIES AS SHOWN SHOULD BE USED TO REPLACE THE CORNER, IF  
 DESTROYED



**LEGEND**

- BUILDING
- HARDWOOD TIMBER
- STONE CITY QUARRY PROPER
- GRASSED AREA
- CULTIVATED AREA



**VICINITY MAP**

\* NOTE:  
 APPROXIMATE SCALE IS GIVEN IN  
 ORDER TO FACILITATE NAVIGATION TO  
 CORNERS IN CASE GPS IS NOT IN USE.



# UNITED STATES PUBLIC LAND SURVEY CORNER CERTIFICATE

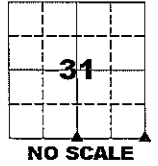
**LAND SURVEY MONUMENTS SITUATED IN SECTION 31, TOWNSHIP 85 NORTH,  
 RANGE 4 WEST OF THE 5TH PRINCIPAL MERIDIAN, JONES COUNTY, IOWA.**

**OFFICE FILE NO.**

SE CORNER SECTION 31-T85N-R4W  
 STATE PLANE COORDINATE  
 NAD 83 IOWA NORTH  
 N 3514947.29  
 E 5505619.22

S 1/4 CORNER SECTION 31-T85N-R4W  
 STATE PLANE COORDINATE  
 NAD 83 IOWA NORTH  
 N 3514870.52  
 E 5502965.22

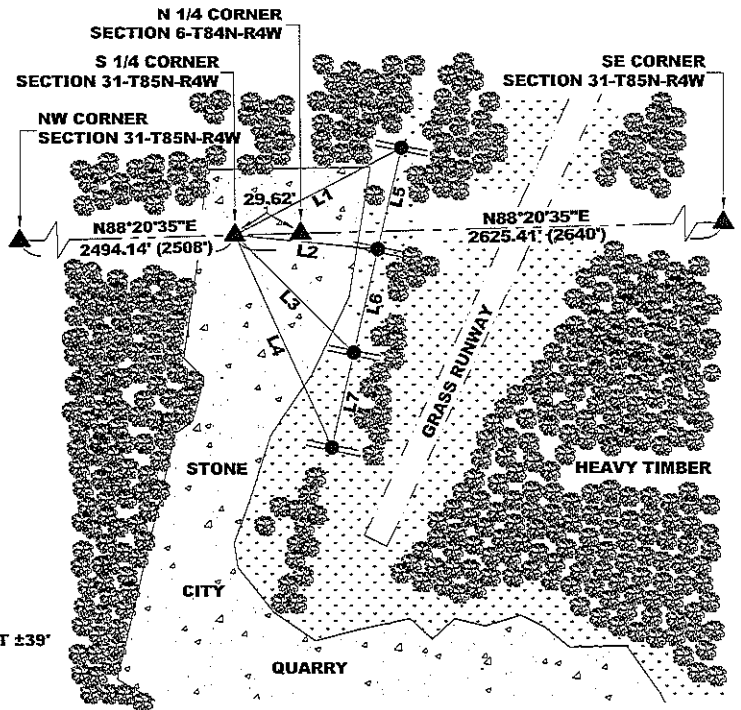
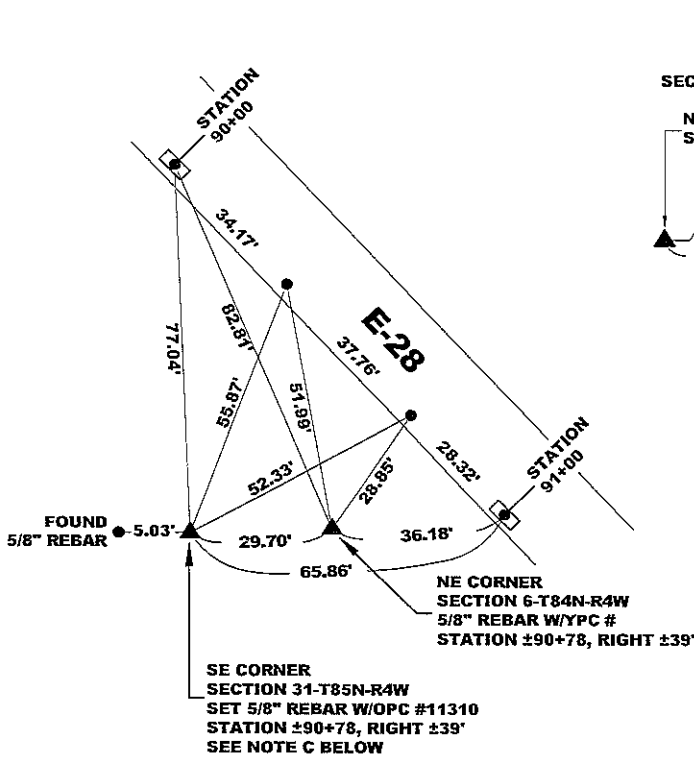
CORNER	SECTION	TOWNSHIP	RANGE
SE	31	T85N	R4W
S 1/4	31	T85N	R4W



**NOTE:**  
 THE STATE PLANE COORDINATE AS INDICATED IS FOR CONVENIENCE ONLY.  
 THE TIES AS SHOWN SHOULD BE USED TO REPLACE THE CORNER, IF  
 DESTROYED

SE CORNER SECTION 31-T85N-R4W  
 (SEE NOTE C BELOW RIGHT)

S 1/4 CORNER SECTION 31-T85N-R4W  
 (SEE NOTE A BELOW RIGHT)



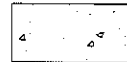
- L1 S52°07'53"W 414.34'
- L2 N80°07'21"W 260.53'
- L3 N28°02'57"W 394.27'
- L4 N10°48'14"W 638.32'
- L5 S13°15'00"W 307.21'
- L6 S13°13'32"W 311.53'
- L7 S13°15'30"W 286.68'

**LEGEND**

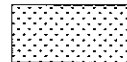
SET 5/8" REBAR W/OPC "JONES COUNTY" ± 1' W-LY OF UTILITY POLE. SET YELLOW "SURVEY MARKER" SIGN ON POWER POLE AS WITNESS.



HARDWOOD TIMBER



STONE CITY QUARRY PROPER



GRASSED AREA

**LEGEND**

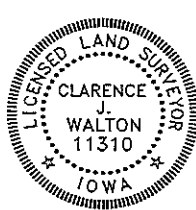
- SET MAG NAIL IN CONCRETE PAVEMENT APPROXIMATELY 8" FROM EDGE OF SLAB
- YPC YELLOW PLASTIC CAP
- OPC ORANGE PLASTIC CAP

**PAGE 2 of 2**

PREVIOUSLY RECORDED IN RECORDER'S DOCUMENT N/A

**MONUMENT DESCRIPTION AND HOW ESTABLISHED** SE CORNER SECTION 31-T85N-R4W: FOUND 5/8" REBAR 34.69 FEET WEST OF NE CORNER SECTION 6-T84N-R4W AND 0.68 FEET NORTH OF SOUTH LINE OF TOWNSHIP 85 NORTH. SET 5/8" REBAR WITH ORANGE PLASTIC CAP #11310 AT DISTANCE PER ORIGINAL GOVERNMENT NOTES; BEING 29.70 FEET (45 LINKS). ALSO SET STEEL FENCE POST WITH YELLOW "SURVEY MARKER" SIGN AS A WITNESS POST. S 1/4 CORNER SECTION 31-T85N-R4W: SET 5/8" REBAR WITH ORANGE PLASTIC CAP #11310 AT PROPORTIONATE DISTANCE ON LINE AND BETWEEN THE SW CORNER OF SAID SECTION 31 AND THE SE CORNER OF SAID SECTION 31. ALSO SET STEEL FENCE POST WITH YELLOW "SURVEY MARKER" SIGN AS A WITNESS POST.

FIELD BOOK MISC. 2007-2008, PAGES 76 & 77. DATE OF SURVEY: 7/16/09



I hereby certify that this land surveying document and the related survey work was performed by me or under my direct personal supervision and that I am a duly registered Land Surveyor under the laws of the State of Iowa.

Signed: *Clarence J. Walton* 7/31/09  
 Clarence J. Walton, L.S.  
 My Registration Renewal Date is December 31, 2009  
 Iowa License Number 11310  
 Pages or sheets covered by this seal: 1 of 2 and 2 of 2.

- A. THERE IS NO CERTIFICATE FOR THE CORNER ON FILE WITH THE RECORDER OF THE COUNTY IN WHICH THE CORNER IS LOCATED.
- B. THE CORNER MONUMENT HAS BEEN REPLACED OR MODIFIED.
- C. THE SURVEYOR IN RESPONSIBLE CHARGE OF THE LAND SURVEYING ACCEPTS A CORNER POSITION THAT DIFFERS FROM THAT SHOWN IN THE PUBLIC RECORDS OF THE COUNTY IN WHICH THE CORNER IS LOCATED.
- D. THE REFERENCE TIES REFERRED TO IN AN EXISTING PUBLIC RECORD NO LONGER EXIST.
- E. ADDED TIES TO FACILITATE LOCATING SECTION CORNER MONUMENT.

**CORNERS TO BE INDEXED**

CORNER	SECTION	TOWNSHIP	RANGE
SE	31	85N	4W
SW	32	85N	4W
S 1/4	31	85N	4W

**JONES COUNTY ENGINEER'S OFFICE**



19501 HWY. 64, ANAMOSA, IOWA 52205  
 (319) 462-3785

2006. 0256

FILED  
RECORDERS OFFICE  
JONES COUNTY IOWA

05 JAN 19 AM 10:52

MARIE KRUTZFIELD  
RECORDER 7.00 Pd

Prepared by Wm. Burger LandSurveyors 510 3rd Street West Court, Worthington, Iowa Phone 563 - 855 2028

### UNITED STATES PUBLIC LAND SURVEY CORNER CERTIFICATE

Land Survey Monuments situated in Section 6, Township 84N, Range 1W, of the Fifth Principal Meridian, Jones County, Iowa. Previously recorded in N/A in the Office of the County Recorder

Monument Description and Remarks: (No Corner Certificates found at the County Recorders Office)

NW CORNER - SET 1/2" IRON ROD W/ YELLOW LS CAP #12642 - USED D.O.T. CORNER TIES TO RESET THIS CORNER

NE CORNER - FOUND 5/8" IRON ROD W/ NO CAP

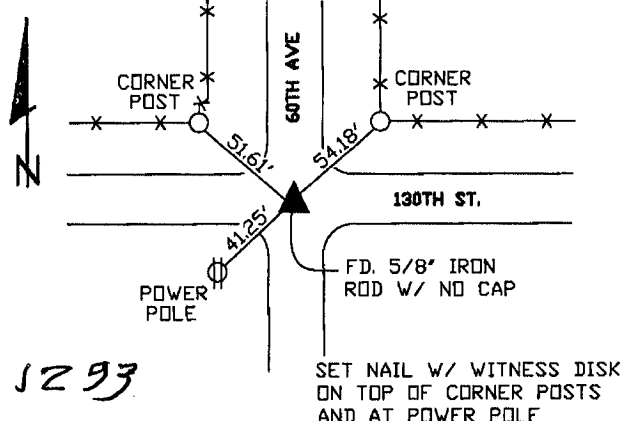
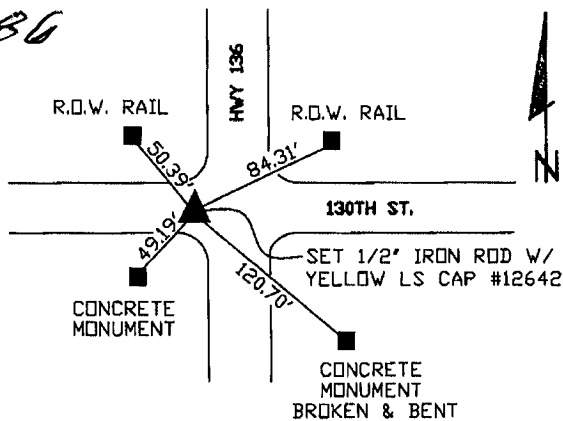
CENTER OF SECTION - FOUND 5/8" IRON ROD W/ NO CAP

N1/4 CORNER - SET 1/2" IRON ROD W/ LS CAP #12642 - USED INFORMATION FROM A SECTION CORNER SURVEY FOUND AT THE IOWA D.O.T. DISTRICT OFFICE

84106a-011606.tif  
NW CORNER

PLAN VIEW 84106b-011606.tif  
NE CORNER

1586



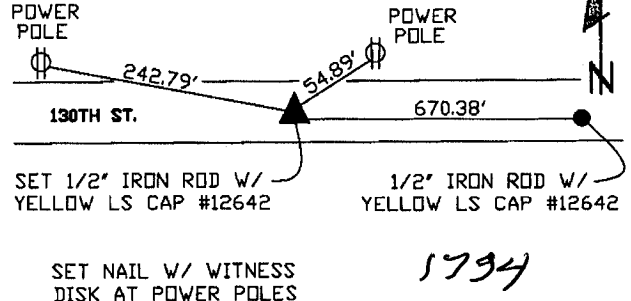
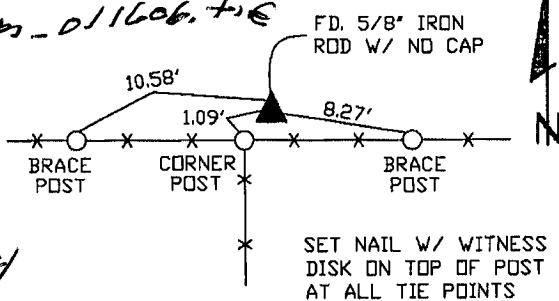
1293

CENTER OF SECTION

N1/4 CORNER

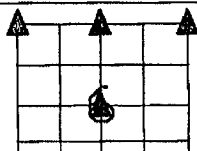
84106a-011606.tif

84106c-011606.tif



1294

1794



CORNERS TO BE INDEXED

NW CORNER	6	84N	1W
NE CORNER	6	84N	1W