

Jones County Marie Krutzfield  
 Fee Book 2011 0915  
 04/07/2011 @ 09:26AM # Pages 1  
 ZSC SEC COR CERT  
 Total Fees: \$0.00

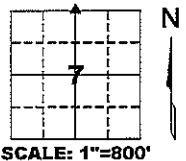
PREPARED BY  
 CLARENCE J. WALTON, JONES COUNTY ENGINEER'S OFFICE, 19501 HWY. 64, ANAMOSA, IOWA, 52205 (319) 462-3785

# UNITED STATES PUBLIC LAND SURVEY CORNER CERTIFICATE

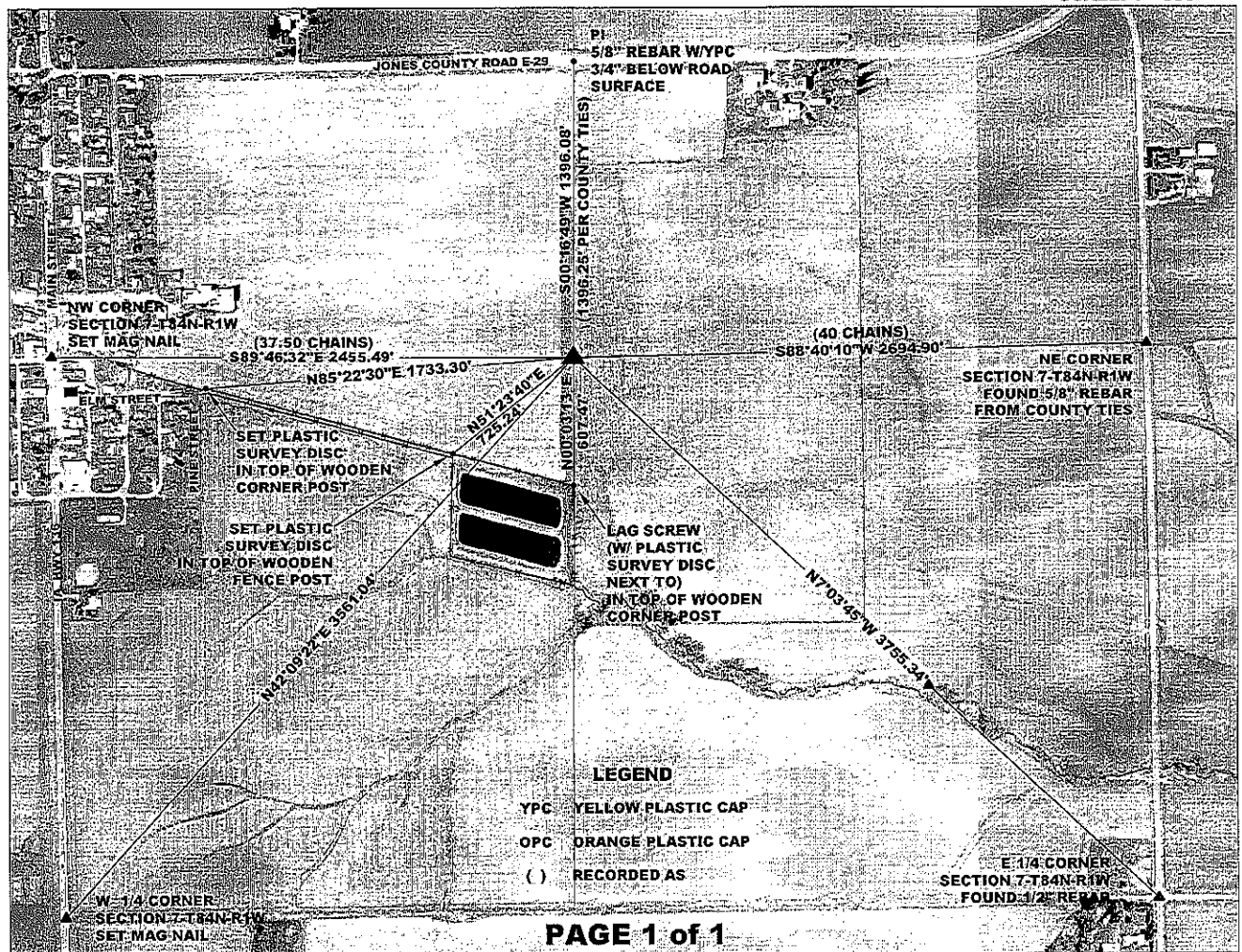
LAND SURVEY MONUMENTS SITUATED IN SECTION 7, TOWNSHIP 84 NORTH,  
 RANGE 1 WEST OF THE 5TH PRINCIPAL MERIDIAN, JONES COUNTY, IOWA.

N 1/4 CORNER SECTION 7-T84N-R1W  
 STATE PLANE COORDINATE (NAD 83 IOWA NORTH)  
 N: 3511883.00  
 E: 5598098.89

CORNER SECTION TOWNSHIP RANGE  
 N 1/4 7 T84N R1W



NOTE:  
 THE STATE PLANE COORDINATE AS INDICATED IS FOR CONVENIENCE ONLY. THE TIES AS SHOWN SHOULD BE USED TO REPLACE THE CORNER, IF DESTROYED



PREVIOUSLY RECORDED N/A  
**MONUMENT DESCRIPTION AND HOW ESTABLISHED** FOUND 6"X8"X12" LIMESTONE STANDING UPRIGHT, TOP OF WHICH FLUSH WITH GROUND. SET 5/8"X48" REBAR WITH ORANGE PLASTIC CAP #11310 BELOW STONE TO PRESERVE LOCATION OF THIS CORNER AS OLD NORTH-SOUTH FENCE LINE HAS BEEN REMOVED AND GRASSED STRIP IS ALL THAT PRESERVES STONE. ALSO SET PERMANENT MAGNET UNDER STONE FOR DETECTION PURPOSES NEXT TO AND SLIGHTLY BELOW TOP OF REBAR. ALL DISTANCES SHOWN ARE GRID.

FIELD BOOK MISC. 2009-2010, PAGE 135. DATE OF SURVEY: 3/22/11



I hereby certify that this land surveying document and the related survey work was performed by me or under my direct personal supervision and that I am a duly registered Land Surveyor under the laws of the State of Iowa.  
 Signed: *Clarence J. Walton* 4/7/11  
 Clarence J. Walton, L.S.  
 My Registration Renewal Date is December 31, 2011  
 Iowa License Number 11310  
 Pages or sheets covered by this seal: 1 of 1

- A. THERE IS NO CERTIFICATE FOR THE CORNER ON FILE WITH THE RECORDER OF THE COUNTY IN WHICH THE CORNER IS LOCATED.
- B. THE CORNER MONUMENT HAS BEEN REPLACED OR MODIFIED.
- C. THE SURVEYOR IN RESPONSIBLE CHARGE OF THE LAND SURVEYING ACCEPTS A CORNER POSITION THAT DIFFERS FROM THAT SHOWN IN THE PUBLIC RECORDS OF THE COUNTY IN WHICH THE CORNER IS LOCATED.
- D. THE REFERENCE TIES REFERRED TO IN AN EXISTING PUBLIC RECORD NO LONGER EXIST.
- E. ADDED TIES TO FACILITATE LOCATING SECTION CORNER MONUMENT.

**CORNERS TO BE INDEXED**

CORNER	SECTION	TOWNSHIP	RANGE
N 1/4	7	84N	1W
S 1/4	6	84N	1W

**JONES COUNTY ENGINEER'S OFFICE**



19501 HWY. 64, ANAMOSA, IOWA 52205  
 (319) 462-3785

# THIS IS NOT A CERTIFICATION

JONES COUNTY ENGINEER'S OFFICE, 19501 HWY. 64, ANAMOSA, IOWA, 52205 (319)462-3785

## UNITED STATES PUBLIC LAND SURVEY CORNER CERTIFICATE

LAND SURVEY MONUMENTS SITUATED IN SECTION 7, TOWNSHIP 84  
NORTH, RANGE 1 WEST OF THE 5TH P.M., JONES COUNTY, IOWA

### CORNERS TO BE INDEXED

CORNER SECTION TOWNSHIP RANGE  
N-QUARTER 7 84N 1W

OFFICE FILE NO.

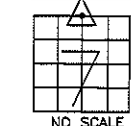
84107c\_011204.jpg

COUNTY SURVEY CREW  
POWELL-WOODER-  
BECKMANN-MAREK  
06-06-86

PROJ. RS-4785(2)

COUNTY RD E-29

PI 24+90.00



NO SCALE



ANGLE IRON POST

1396.25'

STEEL POST

0.7'

8.3'

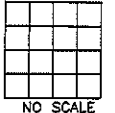
FD, 6"x8"x12" LIMESTONE, DOWN 6" BELOW SURFACE

PREVIOUSLY RECORDED IN BOOK \_\_\_\_\_, PAGE \_\_\_\_\_  
MONUMENT DESCRIPTION AND HOW ESTABLISHED FOUND  
6"x8"x12" LIMESTONE 6" BELOW SURFACE BENEATH FENCELINE. NORTH QUARTER CORNER SECTION 7, TOWNSHIP 84 NORTH, RANGE 1 WEST OF THE 5TH PRINCIPAL MERIDIAN, JONES COUNTY, IOWA.  
TIES AS INDICATED.

### CORNERS TO BE INDEXED

CORNER SECTION TOWNSHIP RANGE

OFFICE FILE NO.



NO SCALE



PREVIOUSLY RECORDED IN BOOK \_\_\_\_\_, PAGE \_\_\_\_\_  
MONUMENT DESCRIPTION AND HOW ESTABLISHED \_\_\_\_\_

### CORNERS TO BE INDEXED

CORNER SECTION TOWNSHIP RANGE  
NE-CORNER 7 84N 1W

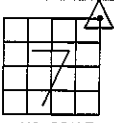
OFFICE FILE NO.  
84107e\_011204.jpg

6-13-86

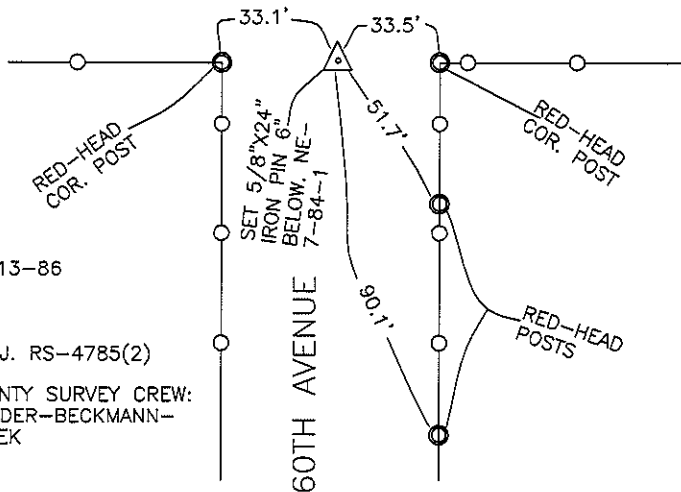
PROJ. RS-4785(2)

COUNTY SURVEY CREW:  
WOODER-BECKMANN-  
MAREK

60TH AVENUE



NO SCALE

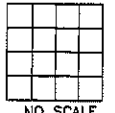


PREVIOUSLY RECORDED IN BOOK \_\_\_\_\_, PAGE \_\_\_\_\_  
MONUMENT DESCRIPTION AND HOW ESTABLISHED DUG HOLE  
FOUND NO STONE, SET 5/8"x24" IRON PIN 6" BELOW ROAD SURFACE, ON LINE WITH EAST-WEST FENCES. NORTHEAST CORNER OF SECTION 7, TOWNSHIP 84 NORTH, RANGE 1 WEST OF THE 5TH PRINCIPAL, JONES COUNTY, IOWA.

### CORNERS TO BE INDEXED

CORNER SECTION TOWNSHIP RANGE

OFFICE FILE NO.



NO SCALE



PREVIOUSLY RECORDED IN BOOK \_\_\_\_\_, PAGE \_\_\_\_\_  
MONUMENT DESCRIPTION AND HOW ESTABLISHED \_\_\_\_\_

~~I hereby declare that this plat, survey or report was made by me or under my direct personal supervision and that I am a duly registered Land Surveyor under the laws of the State of Iowa.~~

Signed:

SEAL

JONES COUNTY  
ENGINEER'S OFFICE

19501 HWY. 64,  
ANAMOSA, IOWA,  
52205 (319)462-3785