

Jones County Marie Krutzfield Recorder
 Fee Book 2013 0293
 01/23/2013 @1015AM # Pages 1
 ZSC SEC COR CERT
 Total Fees: \$7.00

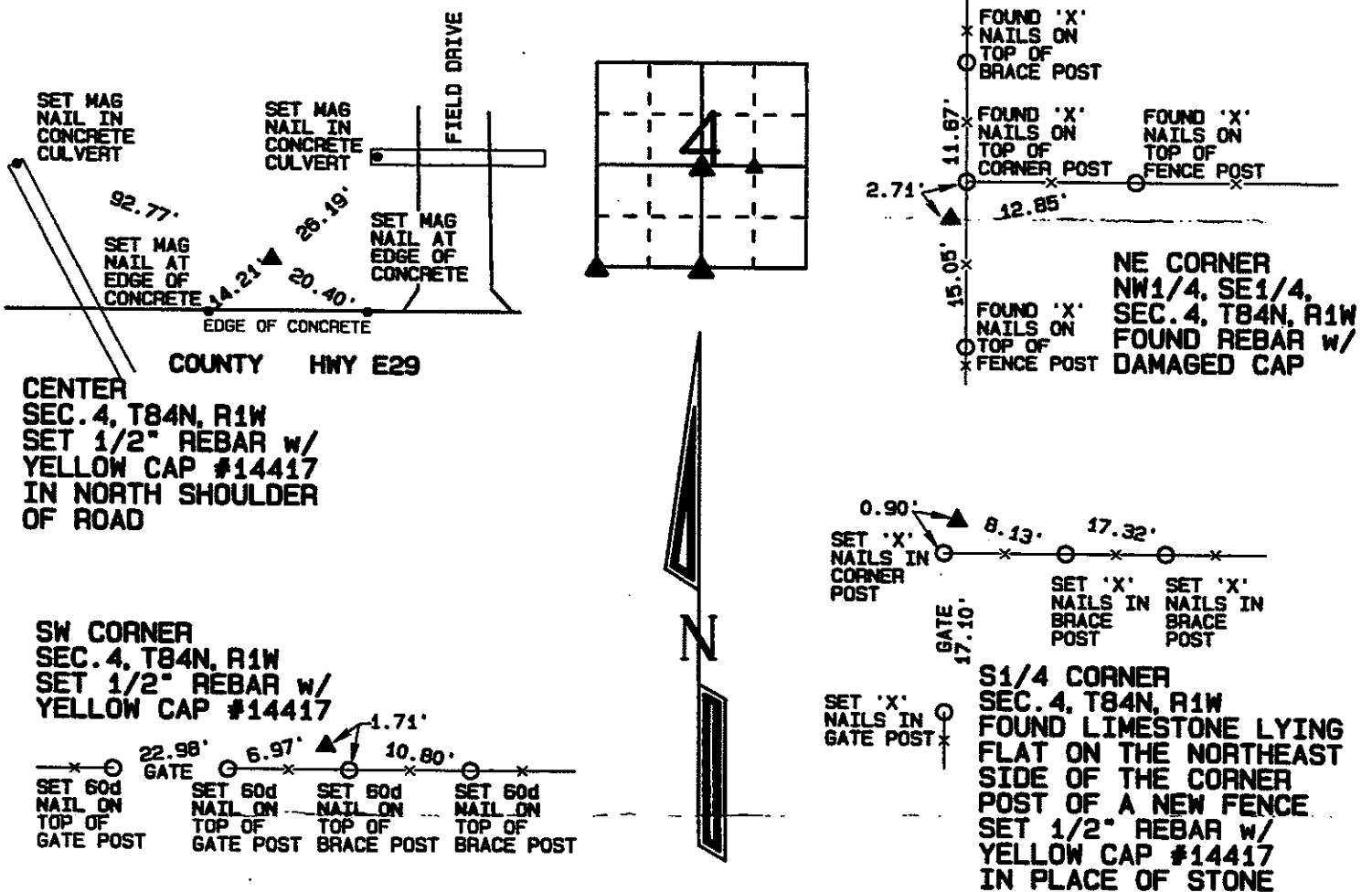
Prepared by: SCHNEIDER Land Surveying and Planning, Inc. P.O. Box 128 Farley, Iowa 52046 563-744-3631

UNITED STATES PUBLIC LAND SURVEY CORNER CERTIFICATE OF

Land Survey Monuments situated in Section 4, Township 84 North, Range 1 West of the Fifth Principal Meridian, Jones County, Iowa.
 Previously recorded (NONE OF RECORD)

Monument Description and Remarks: THE CENTER OF SECTION 4, T84N, R1W WAS ESTABLISHED ON A LINE FROM THE NW1/4 CORNER TO THE E1/4 CORNER OF SAID SECTION 4 AND BY DOUBLING THE DISTANCE FROM THE NW1/4 CORNER TO THE FORTY CORNER A QUARTER MILE WEST OF THE CENTER. A 1/2" REBAR W/ DAMAGED CAP WAS FOUND AT THE NE CORNER OF THE NW1/4 OF THE SE1/4 OF SECTION 4, T84N, R1W. THE SW CORNER OF SECTION 4, T84N, R1W WAS ESTABLISHED IN THE EAST-WEST OCCUPATION FENCE AND BY DOUBLING THE DISTANCE FROM THE S1/4 CORNER THROUGH THE CENTER OF THE COUNTY ROAD. THE POSITION IS 1320' EAST OF THE FENCE LINE INTERSECTION WEST OF THE SW CORNER OF SECTION 4. FOUND LIMESTONE ON THE NE SIDE OF CORNER POST AT THE S1/4 CORNER OF SECTION 4, T84N, R1W AS ILLUSTRATED IN COUNTY ENGINEER'S RECORDS. SET A 1/2" REBAR w/ CAP AT THE LOCATION OF THE STONE AND USED AS THE CORNER.

PLAN - VIEW

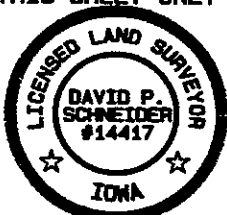


I hereby certify that this land surveying document was prepared and the related survey work was performed by me or under my direct personal supervision and that I am a duly licensed Land Surveyor under the laws of the State of Iowa.

David P. Schneider 1/22/2013
 David P. Schneider P.L.S. #14417 Date:
 My license renewal date is December 31, 2013.

Pages or sheets covered by this seal: THIS SHEET ONLY

SCHNEIDER
 Land Surveying & Planning, Inc.
 P.O. Box 128 Farley, Iowa 52046
 Ph. #563-744-3631 Fax#563-744-3629



List Corners to be Indexed

Corners	Section	Twp	Range
CENTER	4	84N	1W
NE CORNER NW1/4, SE1/4	4	84N	1W
SW CORNER	4	84N	1W
S1/4 CORNER	4	84N	1W

THIS IS NOT A CERTIFICATION

JONES COUNTY ENGINEER'S OFFICE, 19501 HWY. 64, ANAMOSA, IOWA, 52205 (319)462-3785

UNITED STATES PUBLIC LAND SURVEY CORNER CERTIFICATE

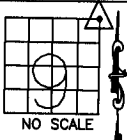
LAND SURVEY MONUMENTS SITUATED IN SECTION 9, TOWNSHIP 84
NORTH, RANGE 1 WEST OF THE 5TH P.M., JONES COUNTY, IOWA

CORNERS TO BE INDEXED

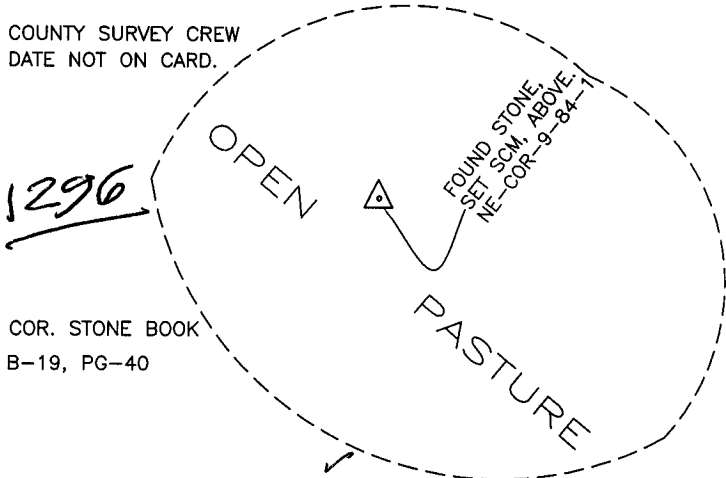
CORNER SECTION TOWNSHIP RANGE
NORTHEAST 9 84N 1W

OFFICE FILE NO.

84109e_011204.jpg



COUNTY SURVEY CREW
DATE NOT ON CARD.



COR. STONE BOOK
B-19, PG-40

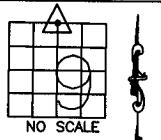
PREVIOUSLY RECORDED IN BOOK _____, PAGE _____
MONUMENT DESCRIPTION AND HOW ESTABLISHED FOUND
STONE 2.5' BELOW SURFACE. SET STANDARD CONCRETE MONUMENT
OVER STONE. CORNER SET IN OPEN PASTURE. NO TIES ON CARD.
NORTHEAST CORNER OF SECTION 9, TOWNSHIP 84 NORTH, RANGE 1
WEST OF THE 5TH PRINCIPAL MERIDIAN, JONES COUNTY, IOWA.

CORNERS TO BE INDEXED

CORNER SECTION TOWNSHIP RANGE
N-QUARTER 9 84N 1W

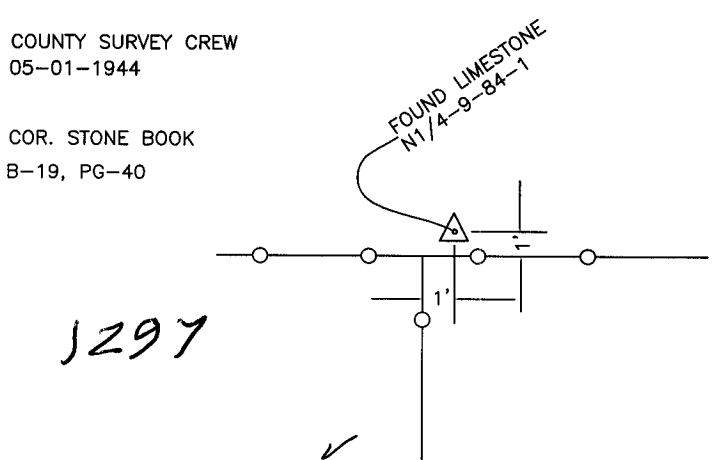
OFFICE FILE NO.

84109c_011204.jpg



COUNTY SURVEY CREW
05-01-1944

COR. STONE BOOK
B-19, PG-40



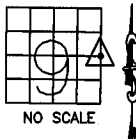
PREVIOUSLY RECORDED IN BOOK _____, PAGE _____
MONUMENT DESCRIPTION AND HOW ESTABLISHED
FOUND LIMESTONE, MAY 1, 1944, 1' NORTH AND 1' EAST OF FENCE
CORNER, NORTH QUARTER CORNER OF SECTION 9, TOWNSHIP 84
NORTH, RANGE 1 WEST OF THE 5TH PRINCIPAL MERIDIAN, JONES
COUNTY, IOWA. TIES AS INDICATED.

CORNERS TO BE INDEXED

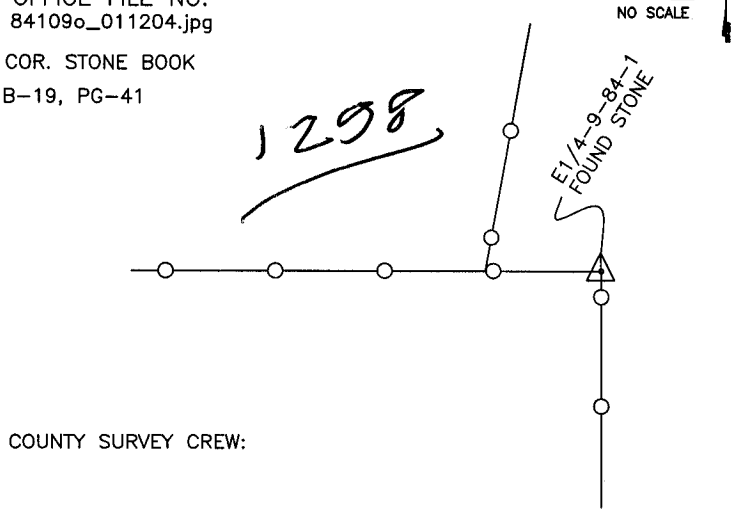
CORNER SECTION TOWNSHIP RANGE
E-QUARTER 9 84N 1W

OFFICE FILE NO.

84109o_011204.jpg



COR. STONE BOOK
B-19, PG-41



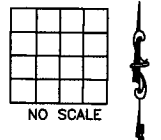
COUNTY SURVEY CREW:

PREVIOUSLY RECORDED IN BOOK _____, PAGE _____
MONUMENT DESCRIPTION AND HOW ESTABLISHED
FOUND STONE NORTH SIDE OF FENCE POST. FENCE SOUTH & WEST.
EAST QUARTER CORNER OF SECTION 9, TOWNSHIP 84 NORTH, RANGE
1 WEST OF THE 5TH PRINCIPAL MERIDIAN, JONES COUNTY, IOWA.

CORNERS TO BE INDEXED

CORNER SECTION TOWNSHIP RANGE

OFFICE FILE NO.



PREVIOUSLY RECORDED IN BOOK _____, PAGE _____
MONUMENT DESCRIPTION AND HOW ESTABLISHED _____

~~I hereby declare that this plat, survey or report was made by me or under my direct personal supervision and that I am a duly registered Land Surveyor under the laws of the State of Iowa.~~

Signed: _____

SEAL

JONES COUNTY
ENGINEER'S OFFICE

19501 HWY. 64,
ANAMOSA, IOWA,
52205 (319)462-3785