

COPY

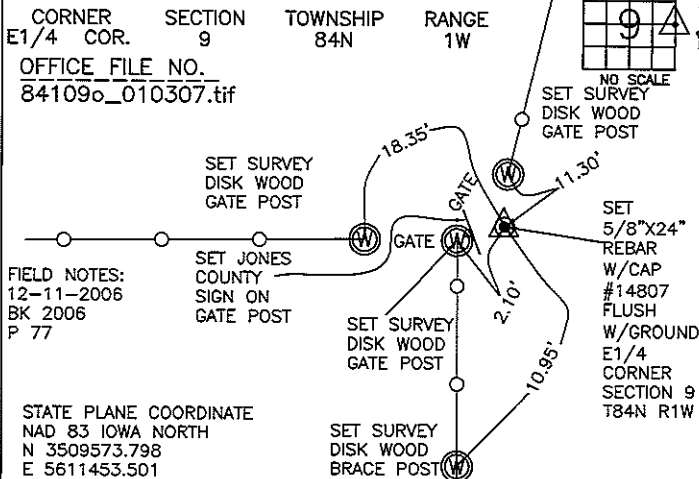
FEEBOOK: 2007 0086  
REC FEES: NO FEE  
PAGES: 1 1/9/2007 10:08 AM  
Marie Krutzfield, Recorder  
Jones County, Iowa

J.D. Tjepkes, LS. JONES COUNTY ENGINEER'S OFFICE, 19501 HWY. 64, ANAMOSA, IOWA, 52205 (319)462-3785

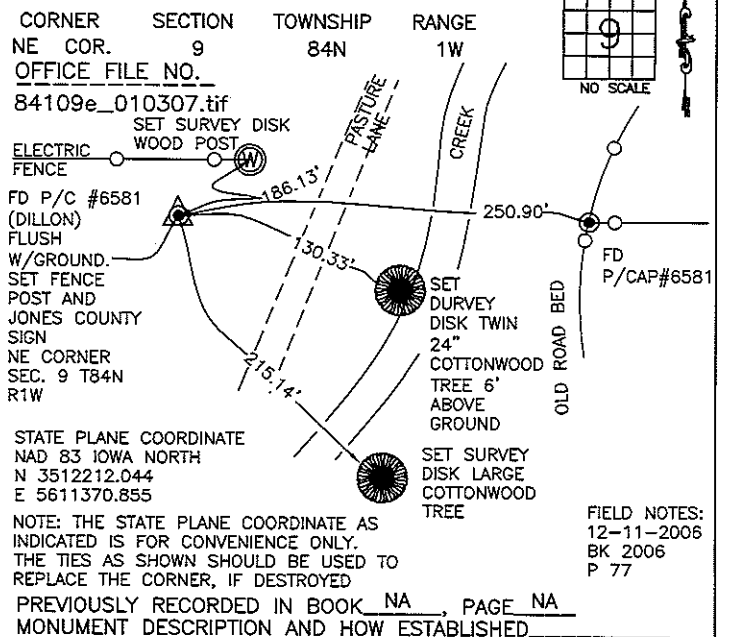
# UNITED STATES PUBLIC LAND SURVEY CORNER CERTIFICATE

LAND SURVEY MONUMENTS SITUATED IN SECTION 9, TOWNSHIP 84  
NORTH, RANGE 1 WEST OF THE 5TH P.M., JONES COUNTY, IOWA

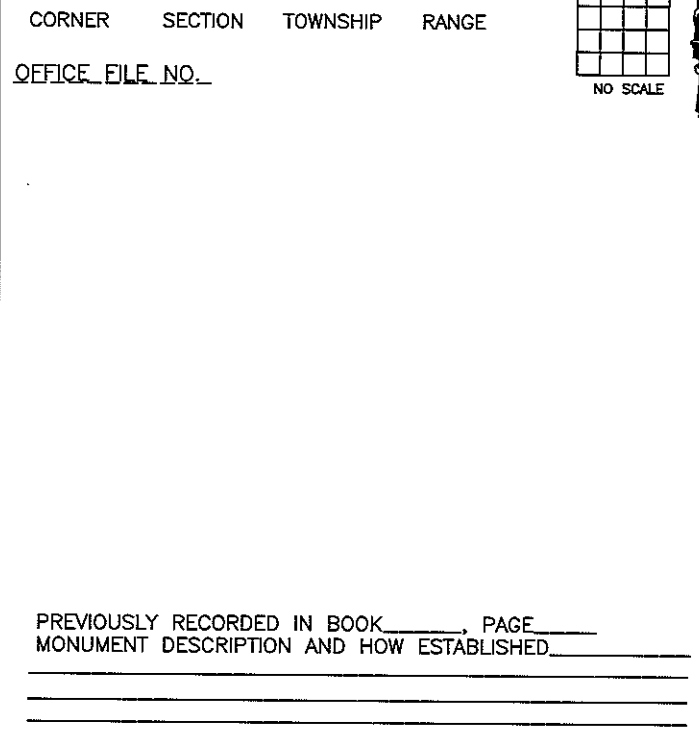
### CORNERS TO BE INDEXED



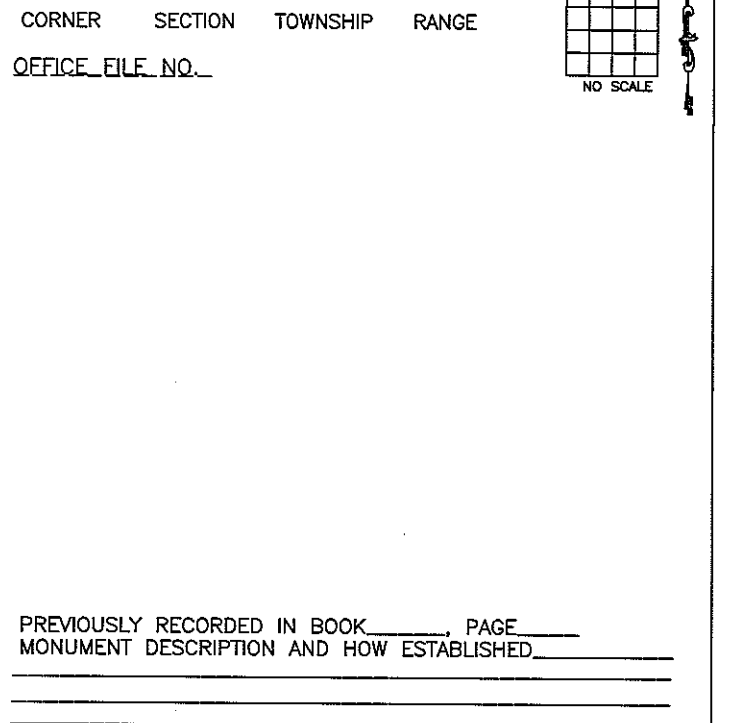
### CORNERS TO BE INDEXED



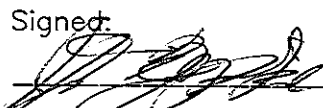
### CORNERS TO BE INDEXED



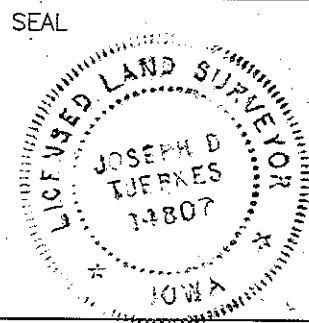
### CORNERS TO BE INDEXED



I hereby declare that this plat, survey or report was made by me or under my direct personal supervision and that I am a duly registered Land Surveyor under the laws of the State of Iowa.

Signed:  1-9-07

Joseph D. Tjepkes L.S. Iowa Reg. No. 14807  
My Registration Renewal Date is December 31, 2008



J.D. Tjepkes LS 14807  
JONES COUNTY  
ENGINEER'S OFFICE  
19501 HWY. 64,  
ANAMOSA, IOWA,  
52205 (319)462-3785

# THIS IS NOT A CERTIFICATION

JONES COUNTY ENGINEER'S OFFICE, 19501 HWY. 64, ANAMOSA, IOWA, 52205 (319)462-3785

## UNITED STATES PUBLIC LAND SURVEY CORNER CERTIFICATE

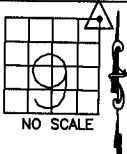
LAND SURVEY MONUMENTS SITUATED IN SECTION 9, TOWNSHIP 84  
NORTH, RANGE 1 WEST OF THE 5TH P.M., JONES COUNTY, IOWA

### CORNERS TO BE INDEXED

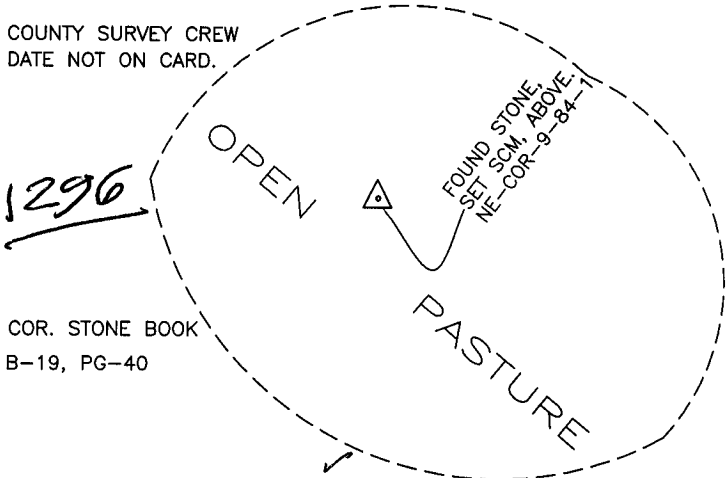
CORNER SECTION TOWNSHIP RANGE  
NORTHEAST 9 84N 1W

OFFICE FILE NO.

84109e\_011204.jpg



COUNTY SURVEY CREW  
DATE NOT ON CARD.



COR. STONE BOOK  
B-19, PG-40

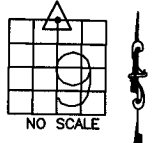
PREVIOUSLY RECORDED IN BOOK \_\_\_\_\_, PAGE \_\_\_\_\_  
MONUMENT DESCRIPTION AND HOW ESTABLISHED FOUND  
STONE 2.5' BELOW SURFACE. SET STANDARD CONCRETE MONUMENT  
OVER STONE. CORNER SET IN OPEN PASTURE. NO TIES ON CARD.  
NORTHEAST CORNER OF SECTION 9, TOWNSHIP 84 NORTH, RANGE 1  
WEST OF THE 5TH PRINCIPAL MERIDIAN, JONES COUNTY, IOWA.

### CORNERS TO BE INDEXED

CORNER SECTION TOWNSHIP RANGE  
N-QUARTER 9 84N 1W

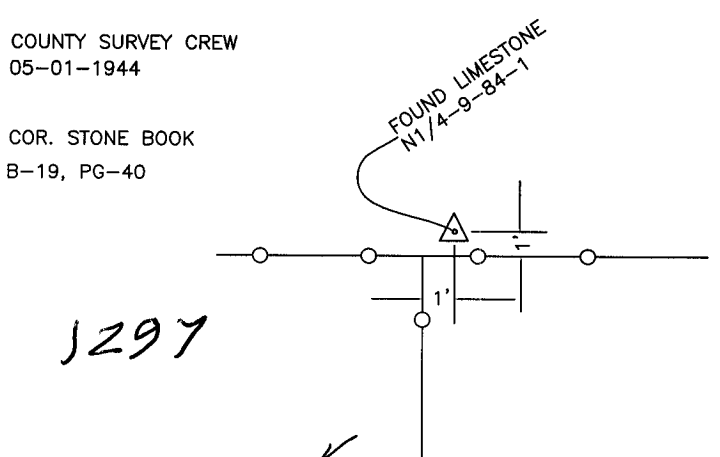
OFFICE FILE NO.

84109c\_011204.jpg



COUNTY SURVEY CREW  
05-01-1944

COR. STONE BOOK  
B-19, PG-40



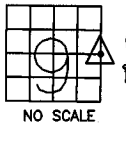
PREVIOUSLY RECORDED IN BOOK \_\_\_\_\_, PAGE \_\_\_\_\_  
MONUMENT DESCRIPTION AND HOW ESTABLISHED  
FOUND LIMESTONE, MAY 1, 1944, 1' NORTH AND 1' EAST OF FENCE  
CORNER, NORTH QUARTER CORNER OF SECTION 9, TOWNSHIP 84  
NORTH, RANGE 1 WEST OF THE 5TH PRINCIPAL MERIDIAN, JONES  
COUNTY, IOWA. TIES AS INDICATED.

### CORNERS TO BE INDEXED

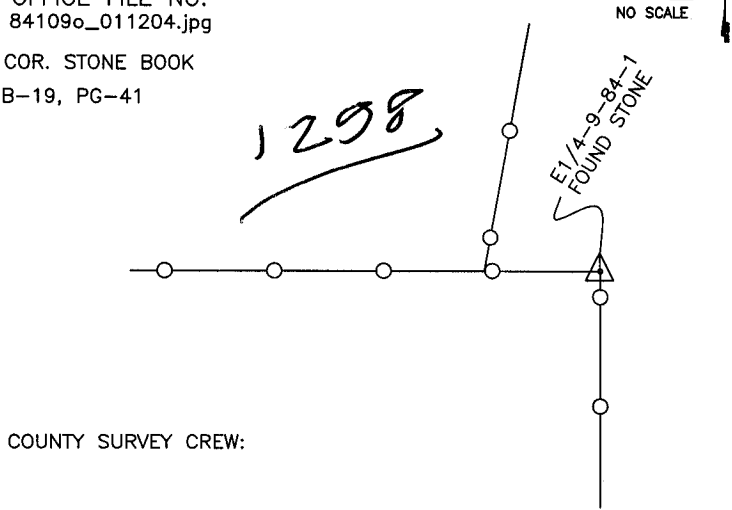
CORNER SECTION TOWNSHIP RANGE  
E-QUARTER 9 84N 1W

OFFICE FILE NO.

84109o\_011204.jpg



COR. STONE BOOK  
B-19, PG-41



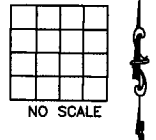
COUNTY SURVEY CREW:

PREVIOUSLY RECORDED IN BOOK \_\_\_\_\_, PAGE \_\_\_\_\_  
MONUMENT DESCRIPTION AND HOW ESTABLISHED  
FOUND STONE NORTH SIDE OF FENCE POST. FENCE SOUTH & WEST.  
EAST QUARTER CORNER OF SECTION 9, TOWNSHIP 84 NORTH, RANGE  
1 WEST OF THE 5TH PRINCIPAL MERIDIAN, JONES COUNTY, IOWA.

### CORNERS TO BE INDEXED

CORNER SECTION TOWNSHIP RANGE

OFFICE FILE NO.



PREVIOUSLY RECORDED IN BOOK \_\_\_\_\_, PAGE \_\_\_\_\_  
MONUMENT DESCRIPTION AND HOW ESTABLISHED \_\_\_\_\_  
\_\_\_\_\_  
\_\_\_\_\_

~~I hereby declare that this plat, survey or report was made by me or under my direct personal supervision and that I am a duly registered Land Surveyor under the laws of the State of Iowa.~~

Signed: \_\_\_\_\_

SEAL

JONES COUNTY  
ENGINEER'S OFFICE

19501 HWY. 64,  
ANAMOSA, IOWA,  
52205 (319)462-3785